

Anti-ALDH7A1 Polyclonal Antibody

Summary

Catalog No.	PHE65401
Host species	Rabbit
Tested applications	ELISA: 1:4000-1:8000, IHC: 1:50-1:100, WB: 1:1000-1:4000
Species reactivity	Human, Mouse, Rat
Immunogen	E. coli - derived recombinant Human ALDH7A1 (Met1-Gln539).
Form	Liquid
Storage buffer	0.01M PBS, pH 7.4, 50% Glycerol, 0.05% Proclin 300.
Clonality	Polyclonal
Isotype	IgG
Applications	ELISA, IHC, WB
Target	ALDH7A1, Delta1-piperideine-6-carboxylate dehydrogenase, Antiquitin-1, P6c dehydrogenase, Alpha-AASA dehydrogenase, Alpha-aminoadipic semialdehyde dehydrogenase, Aldehyde dehydrogenase family 7 member A1, Betaine aldehyde dehydrogenase, ATQ1
Purification	Purified by antigen affinity column.
Accession	P49419
Stability and Storage	Use a manual defrost freezer and avoid repeated freeze thaw cycles. Store at 2 to 8°C for frequent use. Store at -20 to -80°C for twelve months from the date of receipt.
Note	For research use only.

Data Image

Various lysates were subjected to SDS PAGE followed by western blot with ALDH7A1 antibody (PHE65401) at 1 μ g/ml.

Lane 1: 293T cell lysate
Lane 2: Mouse liver lysate
Lane 3: Rat liver lysate
Lane 4: Rat kidney lysate

Second Ab: Goat Anti-Rabbit IgG H&L
Polyclonal antibody, HRP (PTB96431) at 0.1 μ g/mL.

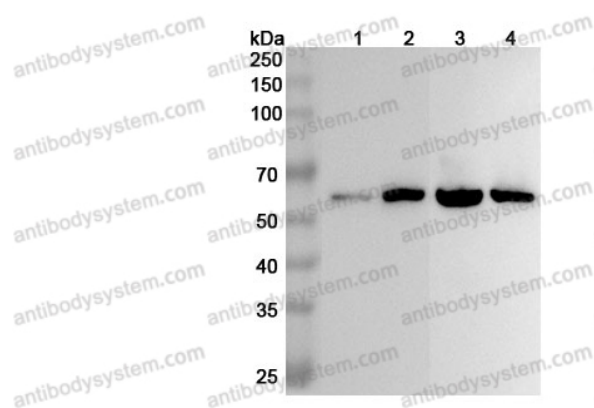
Predict MW: 58 kDa
Observed MW: 58 kDa

Recombinant Protein lysates were subjected to SDS PAGE followed by western blot with ALDH7A1 antibody (PHE65401) at 1 μ g/ml.

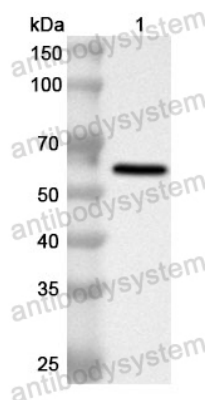
Lane 1: Recombinant Protein

Second Ab: Goat Anti-Rabbit IgG H&L
Polyclonal antibody, HRP (PTB96431) at 0.1 μ g/mL.

Predict MW: 61 kDa
Observed MW: 61 kDa



Western Blot



Western Blot