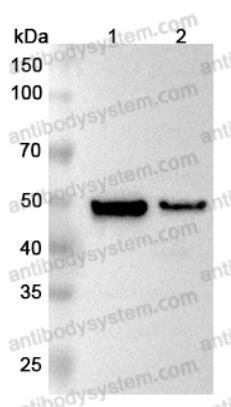


Anti-MAT2A Polyclonal Antibody

Summary

Catalog No.	PHD93201
Host species	Rabbit
Tested applications	ELISA: 1:4000-1:8000, IHC: 1:50-1:100, WB: 1:1000-1:4000
Species reactivity	Human, Mouse, Rat
Immunogen	E. coli - derived recombinant Human MAT2A (Leu176-Tyr395).
Form	Liquid
Storage buffer	0.01M PBS, pH 7.4, 50% Glycerol, 0.05% Proclin 300.
Clonality	Polyclonal
Isotype	IgG
Applications	ELISA, IHC, WB
Target	Methionine adenosyltransferase II,S-adenosylmethionine synthase isoform type-2,MAT 2,AMS2,MAT-II,MATA2,MAT2A,AdoMet synthase 2,Methionine adenosyltransferase 2
Purification	Purified by antigen affinity column.
Accession	P31153
Stability and Storage	Use a manual defrost freezer and avoid repeated freeze thaw cycles. Store at 2 to 8°C for frequent use. Store at -20 to -80°C for twelve months from the date of receipt.
Note	For research use only.

Data Image



Western Blot

Various lysates were subjected to SDS PAGE followed by western blot with MAT2A antibody (PHD93201) at 1µg/ml.

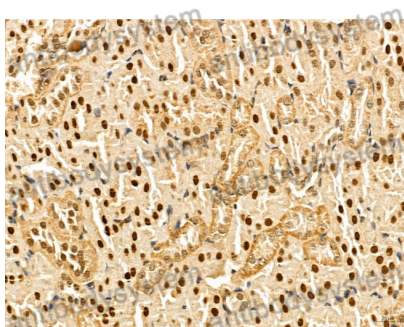
Lane 1: Mouse liver lysate

Lane 2: Rat liver lysate

Second Ab: Goat Anti-Rabbit IgG H&L Polyclonal antibody, HRP (PTB96431) at 0.1 µg/mL.

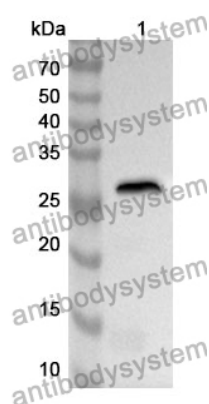
Predict MW: 43 kDa

Observed MW: 48 kDa



Immunohistochemical analysis of mouse kidney stained for MAT2A with PHD93201.

Immunohistochemical



Western Blot

Recombinant Protein lysates were subjected to SDS PAGE followed by western blot with MAT2A antibody (PHD93201) at 1 µg/ml.

Lane 1: Recombinant Protein

Second Ab: Goat Anti-Rabbit IgG H&L Polyclonal antibody, HRP (PTB96431) at 0.1 µg/mL.

Predict MW: 27 kDa

Observed MW: 27 kDa