

# Recombinant Human LAMB3 Protein, N-His

## Summary

---

<b>Catalog No.</b>	YHG64104
<b>Alternative Names</b>	Laminin subunit beta-3, Epiligrin subunit bata, Kalinin B1 chain, Kalinin subunit beta, Laminin B1k chain, Laminin-5 subunit beta, Nicein subunit beta, LAMB3, LAMNB1, laminin-5, laminin-332, epiligrin, kalinin, nicein
<b>Form</b>	Lyophilized
<b>Storage buffer</b>	Lyophilized from a solution in PBS pH 7.4, 0.02% NLS, 1mM EDTA, 4% Trehalose, 1% Mannitol.
<b>Purity</b>	>90% as determined by SDS-PAGE.
<b>Applications</b>	ELISA, Immunogen, SDS-PAGE, WB, Bioactivity testing in progress
<b>Endotoxin level</b>	Please contact with the lab for this information.
<b>Expression system</b>	E. coli
<b>Accession</b>	Q13751
<b>Protein length</b>	Thr587-Lys1172
<b>Nature</b>	Recombinant
<b>Predicted molecular weight</b>	67.24 kDa
<b>Stability and Storage</b>	Use a manual defrost freezer and avoid repeated freeze thaw cycles. Store at 2 to 8°C for frequent use. Store at -20 to -80°C for twelve months from the date of receipt.
<b>Reconstitution</b>	Reconstitute in sterile water for a stock solution.
<b>Species</b>	Homo sapiens (Human)

## Recombinant Proteins &amp; Antibodies

**Shipping**

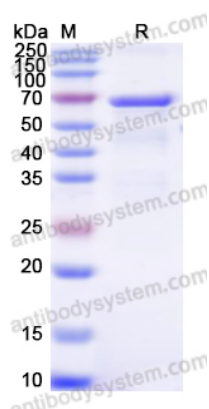
In general, proteins are provided as lyophilized powder/frozen liquid. They are shipped out with dry ice/blue ice unless customers require otherwise.

**Note**

For research use only.

**Data Image**

---



SDS-PAGE

SDS PAGE for Recombinant Human LAMB3 protein