

# InVivoMAb Anti-Human $\beta$ -tryptase/TPSAB1 Antibody (31A)

## Summary

---

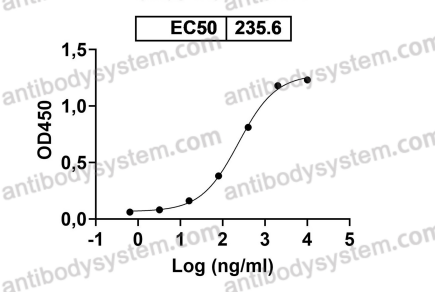
<b>Catalog No.</b>	VHH16101
<b>Clone ID</b>	31A
<b>Host species</b>	Mouse
<b>Species reactivity</b>	Human
<b>Form</b>	Liquid
<b>Storage buffer</b>	0.01M PBS, pH 7.4.
<b>Concentration</b>	1 mg/ml
<b>Purity</b>	>95% as determined by SDS-PAGE.
<b>Clonality</b>	Monoclonal
<b>Isotype</b>	IgG2a, kappa
<b>Applications</b>	Blocking, ELISA
<b>Target</b>	TPSB1, TPS2, Tryptase I, Tryptase-1, TPSAB1, Tryptase alpha-1, Tryptase alpha/beta-1, TPS1
<b>Purification</b>	Protein A/G purified from cell culture supernatant.
<b>Endotoxin level</b>	Please contact with the lab for this information.
<b>Accession</b>	Q15661
<b>Stability and Storage</b>	Use a manual defrost freezer and avoid repeated freeze-thaw cycles. Store at 4°C short term (1-2 weeks). Store at -20°C 12 months. Store at -80°C long term.

**Note**

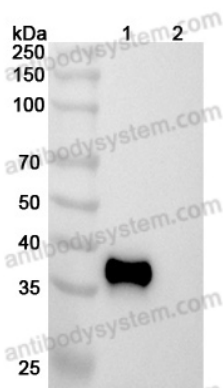
For research use only. Not suitable for clinical or therapeutic use.

## Data Image

Anti-Human  $\beta$ -tryptase/TPSAB1 Antibody (31A)  
binds with TPSAB1



Bioactivity



Western blot

Detects Human  $\beta$ -tryptase/TPSAB1 in indirect ELISAs.

Various lysates were subjected to SDS PAGE followed by western blot with Human TPSAB1 antibody (VHH16101) at 1 $\mu$ g/ml.

Lane 1: Human TPSAB1 transfected HEK293 cell lysate

Lane 2: Non-transfected HEK293 cell lysate

Second Ab: Goat Anti-Mouse IgG H&L Polyclonal antibody, HRP (PMB96431) at 0.1  $\mu$ g/mL.

Predict MW: 31.28 kDa

Observed MW: 36 kDa