

Recombinant Almond Pru1 Pru du 6.0101 Protein, N-His

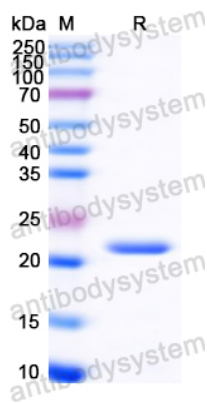
Summary

Catalog No.	YZZ03101
Alternative Names	Prunin 1 Pru du 6.0101, Pru1 Pru du 6.0101, 11S globulin, 11S seed storage protein, Allergen Pru du 6.01, Amandin Pru du 6.0101, Pru du 6.0101, Prunin 1 Pru du 6.0101 acidic chain, Prunin 1 Pru du 6.0101 basic chain
Form	Lyophilized
Storage buffer	Lyophilized from a solution in PBS pH 7.4, 0.02% NLS, 1mM EDTA, 4% Trehalose, 1% Mannitol.
Purity	>90% as determined by SDS-PAGE.
Applications	ELISA, Immunogen, SDS-PAGE, WB, Bioactivity testing in progress
Endotoxin level	Please contact with the lab for this information.
Expression system	E. coli
Accession	E3SH28
Protein length	Asn381-Val551
Nature	Recombinant
Predicted molecular weight	21.68 kDa
Stability and Storage	Use a manual defrost freezer and avoid repeated freeze thaw cycles. Store at 2 to 8°C for frequent use. Store at -20 to -80°C for twelve months from the date of receipt.

Recombinant Proteins & Antibodies

Reconstitution	Reconstitute in sterile water for a stock solution. A copy of datasheet will be provided with the products, please refer to it for details.
Species	Prunus dulcis (Almond) (Amygdalus dulcis)
Shipping	In general, proteins are provided as lyophilized powder/frozen liquid. They are shipped out with dry ice/blue ice unless customers require otherwise.
Note	For research use only.

Data Image



SDS-PAGE

SDS PAGE for Recombinant Prunus dulcis (Almond)
(Amygdalus dulcis) Pru1 Pru du 6.0101 protein