

Anti-Clostridium botulinum botA/BOTOX Antibody (Aa1)

Summary

Catalog No.	RXX00920
Clone ID	Aa1
Host species	Mouse
Species reactivity	Clostridium botulinum (strain Hall / ATCC 3502 / NCTC 13319 / Type A)
Form	Liquid
Storage buffer	0.01M PBS, pH 7.4.
Concentration	2 mg/ml
Purity	>95% as determined by SDS-PAGE.
Clonality	Monoclonal
Isotype	VHH-mFc (IgG2a)
Applications	ELISA, FCM
Target	Botulinum neurotoxin type A, BoNT/A, Bontoxilysin-A, BOTOX, botA, bna
Purification	Protein A/G purified from cell culture supernatant.
Endotoxin level	Please contact with the lab for this information.
Expression system	Mammalian Cells
Accession	P0DPI1

Stability and Storage

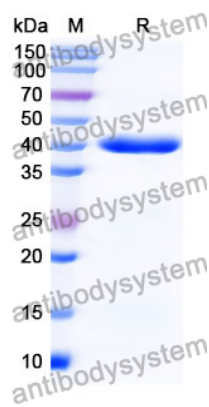
Use a manual defrost freezer and avoid repeated freeze-thaw cycles.

Store at 4°C short term (1-2 weeks). Store at -20°C 12 months. Store at -80°C long term.

Note

For research use only.

Data Image



SDS-PAGE

SDS PAGE for Clostridium botulinum botA/BOTOX
Antibody (Aa1)