

Recombinant EBV/HHV4 GP42/Glycoprotein 42 Protein, C-His

Summary

| | |
|-----------------------------------|---|
| Catalog No. | EVV25101 |
| Alternative Names | Glycoprotein 42, gp42, Soluble gp42, BZLF2 |
| Form | Lyophilized |
| Storage buffer | Lyophilized from a solution in PBS pH 7.4, 5% Trehalose, 5% Mannitol. |
| Purity | >90% as determined by SDS-PAGE. |
| Applications | ELISA, Immunogen, SDS-PAGE, WB, Bioactivity testing in progress |
| Endotoxin level | Please contact with the lab for this information. |
| Expression system | Mammalian Cells |
| Accession | P03205 |
| Protein length | Arg30-Ser223 |
| Nature | Recombinant |
| Predicted molecular weight | 25 kDa |
| Stability and Storage | Use a manual defrost freezer and avoid repeated freeze thaw cycles. Store at 2 to 8°C for frequent use. Store at -20 to -80°C for twelve months from the date of receipt. |
| Reconstitution | Reconstitute in sterile water for a stock solution. |
| Species | Epstein-Barr virus (strain B95-8) (HHV-4) (Human herpesvirus 4) |

Shipping

In general, proteins are provided as lyophilized powder/frozen liquid. They are shipped out with dry ice/blue ice unless customers require otherwise.

Note

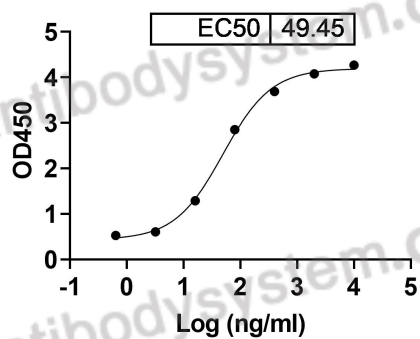
For research use only.

Data Image



SDS-PAGE for Recombinant EBV/HHV4
GP42/Glycoprotein 42 Protein

Clone: SAA2098 binds with EBV/HHV-4 GP42

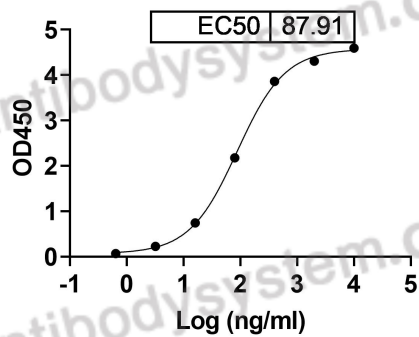


Bioactivity

Detects SAA2098([RVV25101](#)) in indirect ELISAs.



Clone: SAA2099 binds with EBV/HHV-4 GP42



Bioactivity

Detects SAA2099([RVV25102](#)) in indirect ELISAs.