

# Recombinant EBV/HHV4 gH & gL Complex Protein, C-Strep & C-His

## Summary

---

<b>Catalog No.</b>	EVV15102
<b>Alternative Names</b>	Envelope glycoprotein H, gH, gH, BXLf2, Envelope glycoprotein L, gL, gL, BKRF2
<b>Form</b>	Lyophilized
<b>Storage buffer</b>	Lyophilized from a solution in PBS pH7.4, 1mM EDTA, 4% trehalose, 1% mannitol.
<b>Purity</b>	>90% as determined by SDS-PAGE.
<b>Applications</b>	ELISA, Immunogen, SDS-PAGE, WB, Bioactivity testing in progress
<b>Endotoxin level</b>	Please contact with the lab for this information.
<b>Expression system</b>	Mammalian Cells
<b>Accession</b>	P03231 & P03212
<b>Protein length</b>	gH [Ser19-Leu682] & gL [Asn23-Gly137]
<b>Nature</b>	Recombinant
<b>Predicted molecular weight</b>	74 kDa & 14 kDa (Reduced)
<b>Stability and Storage</b>	Use a manual defrost freezer and avoid repeated freeze thaw cycles. Store at 2 to 8°C for frequent use. Store at -20 to -80°C for twelve months from the date of receipt.
<b>Reconstitution</b>	Reconstitute in sterile water for a stock solution.
<b>Species</b>	Epstein-Barr virus (strain B95-8) (HHV-4) (Human herpesvirus 4)

## Recombinant Proteins &amp; Antibodies

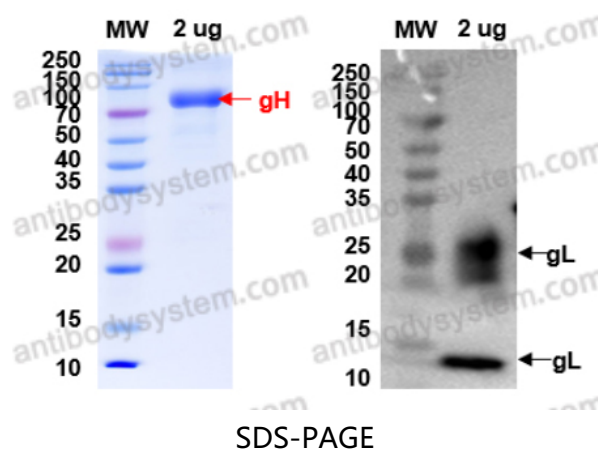
## Shipping

In general, proteins are provided as lyophilized powder/frozen liquid. They are shipped out with dry ice/blue ice unless customers require otherwise.

## Note

For research use only.

## Data Image



SDS-PAGE for Recombinant EBV/HHV4 gH & gL Complex protein.