

Anti-BDNF Polyclonal Antibody

Summary

Catalog No.	PHD59401
Host species	Rabbit
Tested applications	ELISA: 1:4000-1:8000, IHC: 1:50-1:100, WB: 1:1000-1:4000
Species reactivity	Human, Mouse, Rat
Immunogen	E. coli - derived recombinant Human BDNF (Arg128-Arg247).
Form	Liquid
Storage buffer	0.01M PBS, pH 7.4, 50% Glycerol, 0.05% Proclin 300.
Clonality	Polyclonal
Isotype	IgG
Applications	ELISA, IF, IHC, WB
Target	ProBDNF,Abrineurin,Brain-derived neurotrophic factor,BDNF
Purification	Purified by antigen affinity column.
Accession	P23560
Stability and Storage	Use a manual defrost freezer and avoid repeated freeze thaw cycles. Store at 2 to 8°C for frequent use. Store at -20 to -80°C for twelve months from the date of receipt.
Note	For research use only.

Data Image

Various lysates were subjected to SDS PAGE followed by western blot with BDNF antibody (PHD59401) at 1 µg/ml.

Lane 1: Mouse brain lysate

Lane 2: Mouse lung lysate

Lane 3: Mouse cerebellum lysate

Second Ab: Goat Anti-Rabbit IgG H&L

Polyclonal antibody, HRP (PTB96431) at 0.1 µg/mL.

Predict MW: 28 kDa

Observed MW: 30 kDa

Recombinant Protein lysates were subjected to SDS PAGE followed by western blot with BDNF antibody (PHD59401) at 1 µg/ml.

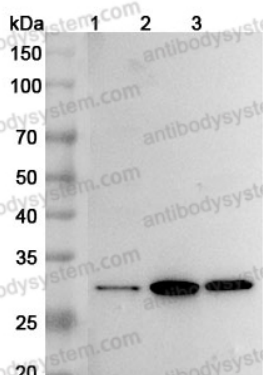
Lane 1: Recombinant Protein

Second Ab: Goat Anti-Rabbit IgG H&L

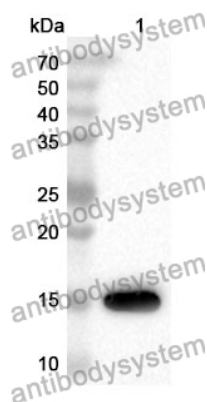
Polyclonal antibody, HRP (PTB96431) at 0.1 µg/mL.

Predict MW: 16 kDa

Observed MW: 16 kDa



Western Blot



Western Blot