

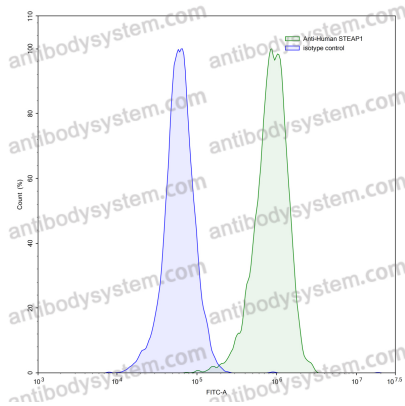
# InVivoMAb Anti-Human STEAP1 Antibody (Iv0158)

## Summary

---

<b>Catalog No.</b>	VHJ76001
<b>Clone ID</b>	Iv0158
<b>Host species</b>	Human
<b>Species reactivity</b>	Human
<b>Form</b>	Liquid
<b>Storage buffer</b>	0.01M PBS, pH 7.4.
<b>Concentration</b>	1 mg/ml
<b>Purity</b>	>95% as determined by SDS-PAGE.
<b>Clonality</b>	Monoclonal
<b>Isotype</b>	IgG1, kappa
<b>Applications</b>	ELISA, FCM, Neutralization
<b>Target</b>	PRSS24, STEAP1, STEAP, Metalloreductase STEAP1, Six-transmembrane epithelial antigen of prostate 1
<b>Purification</b>	Protein A/G purified from cell culture supernatant.
<b>Endotoxin level</b>	Please contact with the lab for this information.
<b>Accession</b>	Q9UHE8
<b>Stability and Storage</b>	Use a manual defrost freezer and avoid repeated freeze-thaw cycles. Store at 4°C short term (1-2 weeks). Store at -20°C 12 months. Store at -80°C long term.
<b>Note</b>	For research use only. Not suitable for clinical or therapeutic use.

## Data Image



Flow-cytometry

Flow-cytometry using anti-human STEAP1 antibody. LNCaP cells were stained with an irrelevant antibody (Blue Histogram) or an anti-human STEAP1 antibody monoclonal antibody (Catalog # VHJ76001, Green Histogram) at a concentration of 5  $\mu\text{g}/\text{ml}$  for 30 mins at RT. After washing, bound antibody was detected using a FITC conjugated goat anti-human antibody (Catalog # PHB96441) and cells analysed on a NovoCyt Flow Cytometer.