

Research Grade Lumiliximab

Summary

Catalog No.	DHC21301
Alternative Names	IDEC-152, P5E8, CAS: 357613-86-6
Clone ID	Lumiliximab
Host species	Chimeric
Species reactivity	Human
Form	Liquid
Storage buffer	0.01M PBS, pH 7.4.
Concentration	1.66 mg/ml
Purity	>95% as determined by SDS-PAGE.
Clonality	Monoclonal
Isotype	IgG1-kappa
Applications	Research Grade Biosimilar
Target	Lymphocyte IgE receptor, C-type lectin domain family 4 member J, Low affinity immunoglobulin epsilon Fc receptor, CD23A, BLAST-2, Immunoglobulin E-binding factor, IGEBF, CD23, Fc-epsilon-RII, CLEC4J, FCE2, FCER2
Purification	Protein A/G purified from cell culture supernatant.
Endotoxin level	Please contact with the lab for this information.
Expression system	Mammalian Cells
Accession	P06734

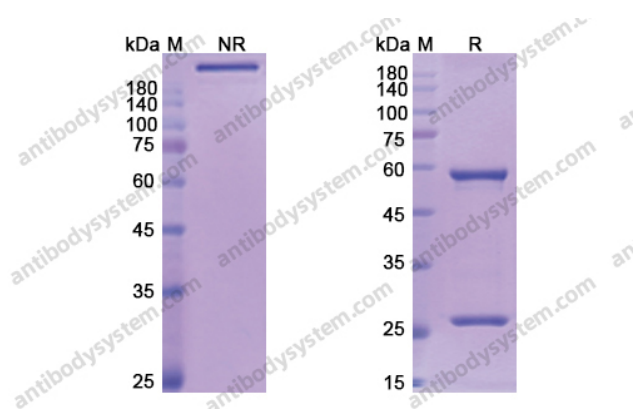
Stability and Storage

Use a manual defrost freezer and avoid repeated freeze-thaw cycles.

Store at 4°C short term (1-2 weeks). Store at -20°C 12 months. Store at -80°C long term.

Note

For research use only. Not suitable for clinical or therapeutic use.

Data Image

SDS-PAGE

SDS PAGE for Lumiliximab