

Anti-Human GAPDH Polyclonal Antibody

Summary

Catalog No.	PHC09001
Host species	Rabbit
Tested applications	ELISA: 1:4000-1:8000, IHC: 1:50-1:100, WB: 1:1000-1:4000
Species reactivity	Human, Mouse, Rat, Zebrafish
Immunogen	E. coli - derived recombinant Human GAPDH (Met1-Glu335).
Form	Liquid
Storage buffer	0.01M PBS, pH 7.4, 50% Glycerol, 0.05% Proclin 300.
Clonality	Polyclonal
Isotype	IgG
Applications	ELISA, IHC, WB
Target	GAPD, Peptidyl-cysteine S-nitrosylase GAPDH, GAPDH, Glyceraldehyde-3-phosphate dehydrogenase
Purification	Purified by antigen affinity column.
Accession	P04406
Stability and Storage	Use a manual defrost freezer and avoid repeated freeze thaw cycles. Store at 2 to 8°C for frequent use. Store at -20 to -80°C for twelve months from the date of receipt.
Note	For research use only.

Data Image



Western Blot

Various lysates were subjected to SDS PAGE followed by western blot with GAPDH antibody (PHC09001) at 1 μ g/ml.

Lane 1: Hela cell lysate
Lane 2: HepG2 cell lysate
Lane 3: A549 cell lysate
Lane 4: K562 cell lysate
Lane 5: PC-3 cell lysate
Lane 6: PC-12 cell lysate
Lane 7: MCF-7 cell lysate
Lane 8: HT-29 cell lysate

Second Ab: Goat Anti-Rabbit IgG H&L Polyclonal antibody, HRP (PTB96431) at 0.1 μ g/mL.

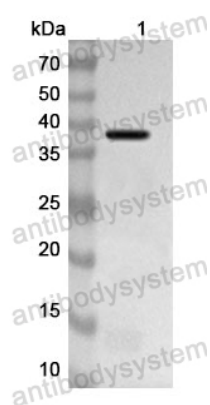
Predict MW: 36 kDa

Observed MW: 36 kDa



Immunohistochemical

Immunohistochemical analysis of mouse intestine stained for GAPDH with PHC09001.



Western Blot

Recombinant Protein lysates were subjected to SDS PAGE followed by western blot with GAPDH antibody (PHC09001) at 1 μ g/ml.

Lane 1: Recombinant Protein

Second Ab: Goat Anti-Rabbit IgG H&L Polyclonal antibody, HRP (PTB96431) at 0.1 μ g/mL.

Predict MW: 38 kDa

Observed MW: 38 kDa