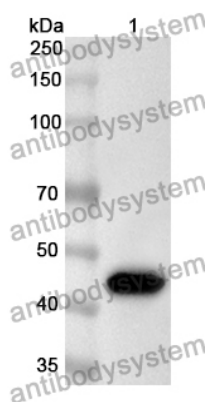


Anti-Human EIF4A3/DDX48 Polyclonal Antibody

Summary

Catalog No.	PHE23301
Host species	Rabbit
Tested applications	ELISA: 1:4000-1:8000, IHC: 1:50-1:100, WB: 1:1000-1:4000
Species reactivity	Human
Immunogen	E. coli - derived recombinant Human EIF4A3/DDX48 (Phe40-Ile411).
Form	Liquid
Storage buffer	0.01M PBS, pH 7.4, 50% Glycerol, 0.05% Proclin 300.
Clonality	Polyclonal
Isotype	IgG
Applications	ELISA, IHC, WB
Target	ATP-dependent RNA helicase eIF4A-3, eIF-4A-III, Eukaryotic translation initiation factor 4A isoform 3, Eukaryotic initiation factor 4A-like NUK-34, Nuclear matrix protein 265, hNMP 265, KIAA0111, DDX48, NMP 265, eIF4A-III, Eukaryotic initiation factor 4A-III, ATP-dependent RNA helicase DDX48, EIF4A3, DEAD box protein 48
Purification	Purified by antigen affinity column.
Accession	P38919
Stability and Storage	Use a manual defrost freezer and avoid repeated freeze thaw cycles. Store at 2 to 8°C for frequent use. Store at -20 to -80°C for twelve months from the date of receipt.
Note	For research use only.

Data Image



Western Blot

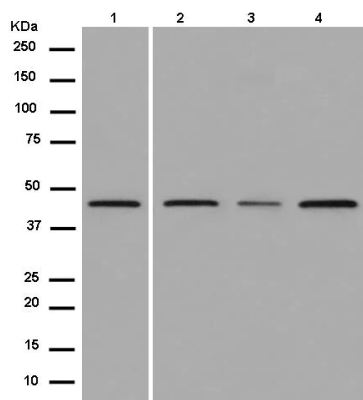
Recombinant Protein lysates were subjected to SDS PAGE followed by western blot with EIF4A3/DDX48 antibody (PHE23301) at 1 µg/ml.

Lane 1: Recombinant protein

Second Ab: Goat Anti-Rabbit IgG H&L Polyclonal antibody, HRP (PTB96431) at 0.1 µg/mL.

Predict MW: 45 kDa

Observed MW: 45 kDa



Western Blot

Various lysates were subjected to SDS PAGE followed by western blot with EIF4A3 antibody (PHE23301) at 1 µg/ml.

Lane 1: MCF7

Lane 2: Hela

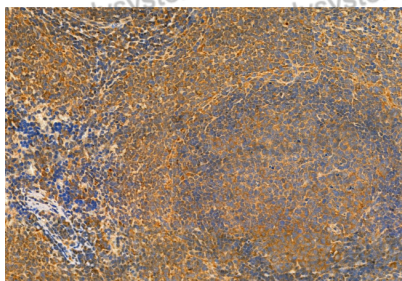
Lane 3: Raji

Lane 4: HepG2

Second Ab: Goat Anti-Rabbit IgG H&L Polyclonal antibody, HRP (PTB96431) at 0.1 µg/mL.

Predict MW: 47 kDa

Observed MW: 47 kDa



Immunohistochemical analysis of rat spleen stained for EIF4A3 with PHE23301.

Immunohistochemical