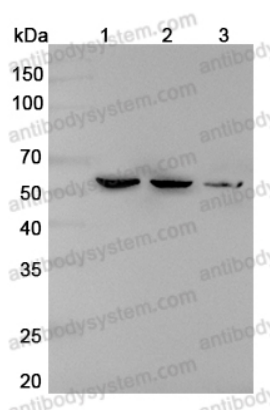


Anti-RTCB Polyclonal Antibody

Summary

Catalog No.	PHJ96601
Host species	Rabbit
Tested applications	ELISA: 1:4000-1:8000, IHC: 1:50-1:100, WB: 1:1000-1:4000
Species reactivity	Human, Mouse, Rat
Immunogen	E. coli - derived recombinant Human RTCB (Met1-Gly505).
Form	Liquid
Storage buffer	0.01M PBS, pH 7.4, 50% Glycerol, 0.05% Proclin 300.
Clonality	Polyclonal
Isotype	IgG
Applications	ELISA, IHC, WB
Target	C22orf28, RNA-splicing ligase RtcB homolog, RTCB, 3'-phosphate/5'-hydroxy nucleic acid ligase
Purification	Purified by antigen affinity column.
Accession	Q9Y3I0
Stability and Storage	Use a manual defrost freezer and avoid repeated freeze thaw cycles. Store at 2 to 8°C for frequent use. Store at -20 to -80°C for twelve months from the date of receipt.
Note	For research use only.

Data Image



Western Blot

Various lysates were subjected to SDS PAGE followed by western blot with RTCB antibody (PHJ96601) at 1 μ g/ml.

Lane 1: 293T cell lysate

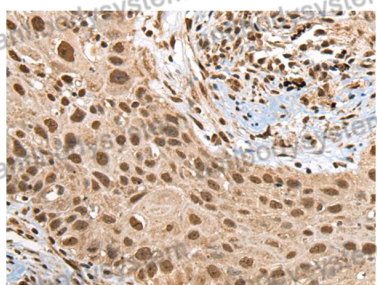
Lane 2: Jurkat cell lysate

Lane 3: Mouse liver lysate

Second Ab: Goat Anti-Rabbit IgG H&L Polyclonal antibody, HRP (PTB96431) at 0.1 μ g/mL.

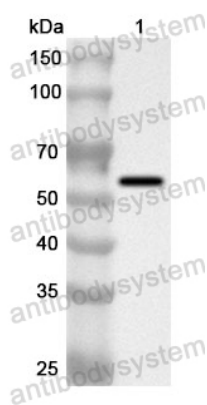
Predict MW: 55 kDa

Observed MW: 55 kDa



Immunohistochemical analysis of Human lung cancer tissue stained for RTCB with PHJ96601.

Immunohistochemical



Western Blot

Recombinant Protein lysates were subjected to SDS PAGE followed by western blot with RTCB antibody (PHJ96601) at 1 μ g/ml.

Lane 1: Recombinant Protein

Second Ab: Goat Anti-Rabbit IgG H&L Polyclonal antibody, HRP (PTB96431) at 0.1 μ g/mL.

Predict MW: 58 kDa

Observed MW: 58 kDa