

Anti-Human CD172a/SIRPA Antibody (SAA1393)

Summary

Catalog No.	FHF64020
Clone ID	SAA1393
Host species	Mouse
Conjugation	Unconjugated
Species reactivity	Human
Form	Liquid
Storage buffer	0.01M PBS, pH 7.4, 0.09% Sodium azide.
Concentration	1 mg/ml
Purity	>95% as determined by SDS-PAGE.
Clonality	Monoclonal
Isotype	IgG1, kappa
Applications	FCM
Target	BIT, Signal-regulatory protein alpha-1, Brain Ig-like molecule with tyrosine-based activation motifs, MFR, SIRP, Sirp-alpha-1, Sirp-alpha-2, PTPNS1, SIRPA, SHP substrate 1, CD172 antigen-like family member A, Sirp-alpha-3, Inhibitory receptor SHPS-1, Signal-regulatory protein alpha-3, CD172a, Tyrosine-protein phosphatase non-receptor type substrate 1, MyD-1 antigen, Bit, SHPS-1, Macrophage fusion receptor, Signal-regulatory protein alpha-2, SHPS1, MYD1, p84
Purification	Protein A/G purified from cell culture supernatant.
Endotoxin level	Please contact with the lab for this information.

Recombinant Proteins & Antibodies

Accession P78324

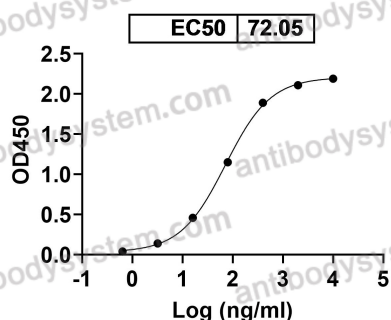
Stability and Storage

Use a manual defrost freezer and avoid repeated freeze-thaw cycles.
Store at 4°C short term (1-2 weeks). Store at -20°C 12 months. Store at -80°C long term.

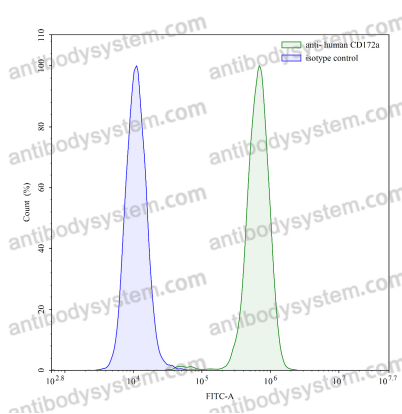
Note For research use only.

Data Image

Anti-Human CD172a/SIRPA Antibody (SAA1393)
binds with CD172a



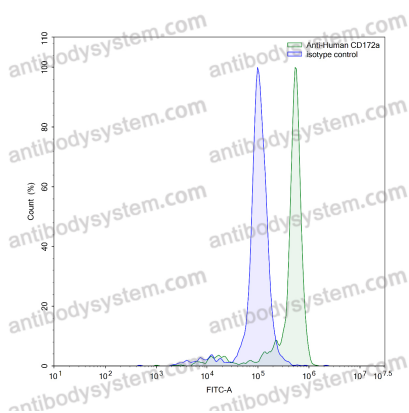
Bioactivity



Flow-cytometry

Detects CD172a/SIRPA in indirect ELISAs.

Flow-cytometry using anti-human CD172a antibody. U937 cells were stained with an irrelevant antibody (Blue Histogram) or an anti-human CD172a antibody monoclonal antibody (Catalog # FHF64020, Green Histogram) at a concentration of 5 µg/ml for 30 mins at RT. After washing, bound antibody was detected using a FITC conjugated goat anti-mouse antibody (Catalog # PMB96441) and cells analysed on a NovoCyt Flow Cytometer.



Flow-cytometry

Flow-cytometry using anti-human CD172a antibody. Human peripheral blood monocytes were stained with an irrelevant antibody (Blue Histogram) or an anti-human CD172a antibody monoclonal antibody (Catalog # FHF64020, Green Histogram) at a concentration of 5 $\mu\text{g/ml}$ for 30 mins at RT. After washing, bound antibody was detected using a FITC conjugated goat anti-mouse antibody (Catalog # PMB96441) and cells analysed on a NovoCyt Flow Cytometer.