

# Research Grade Anti-Human CD22 Antibody

## (Immurait-LI2Mab)

### Summary

---

<b>Catalog No.</b>	DHD38505
<b>Clone ID</b>	Immurait-LI2Mab
<b>Host species</b>	Mouse
<b>Species reactivity</b>	Human
<b>Form</b>	Liquid
<b>Storage buffer</b>	0.01M PBS, pH 7.4.
<b>Concentration</b>	1 mg/ml
<b>Purity</b>	>95% as determined by SDS-PAGE.
<b>Clonality</b>	Monoclonal
<b>Isotype</b>	IgG2a-kappa
<b>Applications</b>	Research Grade Biosimilar
<b>Target</b>	Sialic acid-binding Ig-like lectin 2, Siglec-2, CD22, T-cell surface antigen Leu-14, BL-CAM, SIGLEC2, B-lymphocyte cell adhesion molecule, B-cell receptor CD22
<b>Purification</b>	Protein A/G purified from cell culture supernatant.
<b>Endotoxin level</b>	Please contact with the lab for this information.
<b>Expression system</b>	Mammalian Cells
<b>Accession</b>	P20273

## Stability and Storage

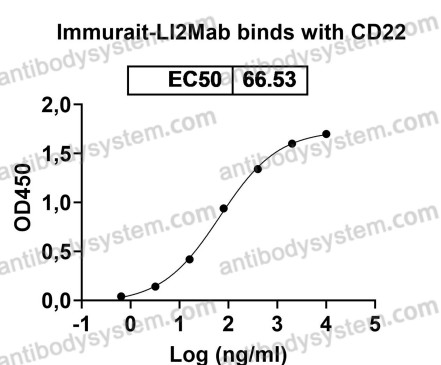
Use a manual defrost freezer and avoid repeated freeze-thaw cycles.

Store at 4°C short term (1-2 weeks). Store at -20°C 12 months. Store at -80°C long term.

## Note

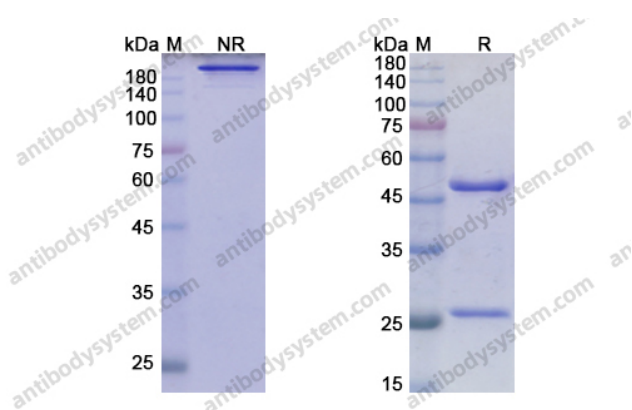
For research use only. Not suitable for clinical or therapeutic use.

## Data Image



Detects Human CD22 in indirect ELISAs.

## Bioactivity



SDS PAGE for Immurait-LI2Mab

## SDS-PAGE