

# Anti-PVALB Polyclonal Antibody

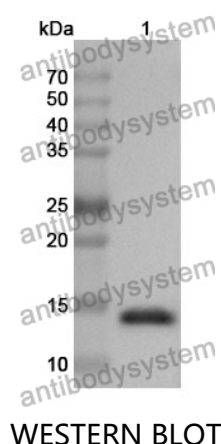
## Summary

---

<b>Catalog No.</b>	PHD39901
<b>Host species</b>	Rabbit
<b>Tested applications</b>	ELISA: 1:4000-1:8000, IHC: 1:50-1:100, WB: 1:1000-1:4000
<b>Species reactivity</b>	Human, Mouse, Rat
<b>Immunogen</b>	E. coli - derived recombinant Human PVALB (Met1-Ser110).
<b>Form</b>	Liquid
<b>Storage buffer</b>	0.01M PBS, pH 7.4, 50% Glycerol, 0.05% Proclin 300.
<b>Clonality</b>	Polyclonal
<b>Isotype</b>	IgG
<b>Applications</b>	ELISA, IHC, WB
<b>Target</b>	Parvalbumin alpha,PVALB
<b>Purification</b>	Purified by antigen affinity column.
<b>Accession</b>	P20472
<b>Stability and Storage</b>	Use a manual defrost freezer and avoid repeated freeze thaw cycles. Store at 2 to 8°C for frequent use. Store at -20 to -80°C for twelve months from the date of receipt.
<b>Note</b>	For research use only.

## Data Image

---



WESTERN BLOT

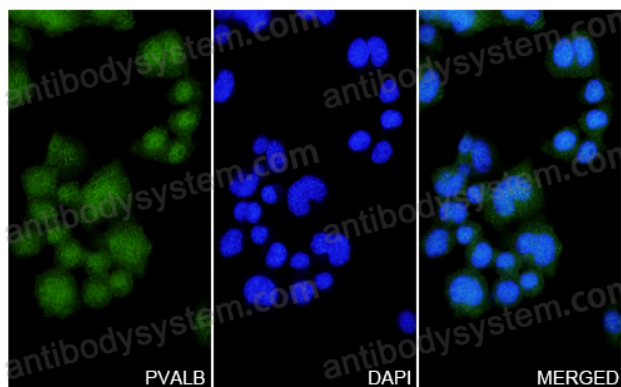
Recombinant Protein lysates were subjected to SDS PAGE followed by western blot with PVALB antibody (PHD39901) at 1 µg/ml.

Lane 1: Recombinant protein

Second Ab: Goat Anti-Rabbit IgG H&L Polyclonal antibody, HRP (PTB96431) at 0.1 µg/mL.

Predict MW: 14 kDa

Observed MW: 14 kDa



Immunocytochemistry/ Immunofluorescence

PVALB in N2A Cell Line.

The N2A cells were fixed with 4% paraformaldehyde (20 min), and then blocked with 5% goat serum for 1h. And the cells were incubated for 2h at 37°C with PVALB (PHD39901) at 9 µg/ml. The section was then incubated with Goat Anti-Rabbit IgG (Alexa Fluor-488) preabsorbed at 1/100 dilution (Shown in green) for 1 hour at room temperature. Nuclear DNA was labelled with DAPI (shown in blue).