

# Anti-Human BACE1 Nanobody (SAA1336)

## Summary

---

<b>Catalog No.</b>	RHF19602
<b>Clone ID</b>	SAA1336
<b>Host species</b>	Alpaca
<b>Species reactivity</b>	Human
<b>Form</b>	Liquid
<b>Storage buffer</b>	0.01M PBS, pH 7.4.
<b>Concentration</b>	1 mg/ml
<b>Purity</b>	>95% as determined by SDS-PAGE.
<b>Clonality</b>	Monoclonal
<b>Isotype</b>	VHH-8His-Cys-tag
<b>Applications</b>	ELISA
<b>Target</b>	BACE1, Memapsin-2, KIAA1149, Asp 2, Beta-site amyloid precursor protein cleaving enzyme 1, BACE, Beta-site APP cleaving enzyme 1, Beta-secretase 1, Aspartyl protease 2, ASP2, Membrane-associated aspartic protease 2, BACE1
<b>Purification</b>	Purified by Nickel column.
<b>Endotoxin level</b>	Please contact with the lab for this information.
<b>Expression system</b>	Mammalian Cells
<b>Accession</b>	P56817

**Stability and Storage**

Use a manual defrost freezer and avoid repeated freeze-thaw cycles.

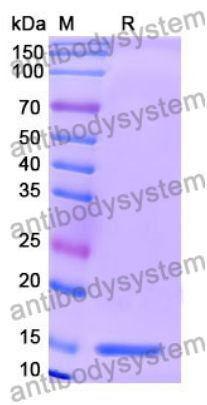
Store at 4°C short term (1-2 weeks). Store at -20°C 12 months. Store at -80°C long term.

**Note**

For research use only.

**Data Image**

---



SDS-PAGE

SDS PAGE for Human BACE1 Nanobody