

Anti-Human CD212/IL12RB1 Nanobody (SAA1300)

Summary

Catalog No.	RHE37101
Clone ID	SAA1300
Host species	Alpaca
Species reactivity	Human
Form	Liquid
Storage buffer	0.01M PBS, pH 7.4.
Concentration	1 mg/ml
Purity	>95% as determined by SDS-PAGE.
Clonality	Monoclonal
Isotype	VHH-8His-Cys-tag
Applications	ELISA, FCM, SPR
Target	IL-12 receptor beta component, CD212, IL-12R-beta-1, IL-12RB1, IL12RB1, Interleukin-12 receptor subunit beta-1, IL-12 receptor subunit beta-1, IL12R, IL-12R subunit beta-1, IL12RB
Purification	Purified by Nickel column.
Endotoxin level	Please contact with the lab for this information.
Expression system	Mammalian Cells
Accession	P42701

Stability and Storage

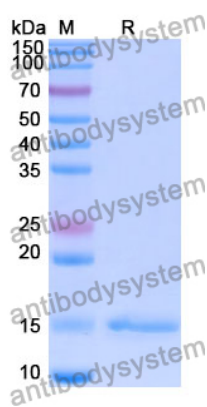
Use a manual defrost freezer and avoid repeated freeze-thaw cycles.

Store at 4°C short term (1-2 weeks). Store at -20°C 12 months. Store at -80°C long term.

Note

For research use only.

Data Image



SDS-PAGE

SDS PAGE for Human CD212/IL12RB1 Nanobody