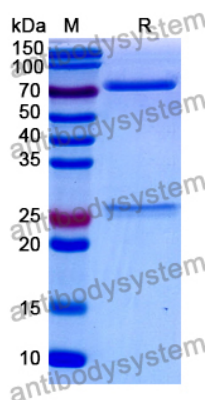


Mouse IgM, Lambda Isotype Control Antibody (MOPC 104E)

Summary

Catalog No.	FMJ93270
Clone ID	MOPC 104E
Host species	Mouse
Conjugation	Unconjugated
Form	Liquid
Storage buffer	0.01M PBS, pH 7.4, 0.09% Sodium azide.
Concentration	1 mg/ml
Purity	>95% as determined by SDS-PAGE.
Clonality	Monoclonal
Isotype	IgM, lambda
Applications	FCM, Isotype Control
Purification	Protein L purified from cell culture supernatant.
Endotoxin level	Please contact with the lab for this information.
Stability and Storage	Use a manual defrost freezer and avoid repeated freeze-thaw cycles. Store at 4°C short term (1-2 weeks). Store at -20°C 12 months. Store at -80°C long term.
Note	For research use only.

Data Image



SDS-PAGE

SDS PAGE for Mouse IgM, Lambda Isotype Control
Antibody (MOPC 104E)