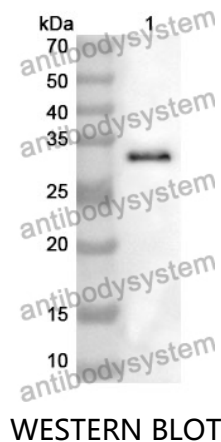


Anti-CD36 Polyclonal Antibody

Summary

Catalog No.	PHD19101
Host species	Rabbit
Tested applications	ELISA: 1:4000-1:8000, IHC: 1:50-1:100, WB: 1:1000-1:4000
Species reactivity	Human, Mouse, Rat
Immunogen	E. coli - derived recombinant Human CD36 (Leu187-Asn428).
Form	Liquid
Storage buffer	0.01M PBS, pH 7.4, 50% Glycerol, 0.05% Proclin 300.
Clonality	Polyclonal
Isotype	IgG
Applications	ELISA, IHC, WB
Target	CD36,FAT,GPIV,Fatty acid translocase,GP4,PAS IV,Leukocyte differentiation antigen CD36,Platelet collagen receptor,Platelet glycoprotein IV,Thrombospondin receptor,Platelet glycoprotein 4,GP3B,Glycoprotein IIIb,GPIIIB,PAS-4
Purification	Purified by antigen affinity column.
Accession	P16671
Stability and Storage	Use a manual defrost freezer and avoid repeated freeze thaw cycles. Store at 2 to 8°C for frequent use. Store at -20 to -80°C for twelve months from the date of receipt.
Note	For research use only.

Data Image



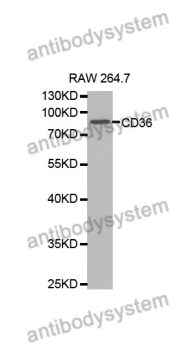
Recombinant Protein lysates were subjected to SDS PAGE followed by western blot with CD36 antibody (PHD19101) at 1 µg/ml.

Lane 1: Recombinant protein

Second Ab: Goat Anti-Rabbit IgG H&L Polyclonal antibody, HRP (PTB96431) at 0.1 µg/mL.

Predict MW: 30 kDa

Observed MW: 30 kDa



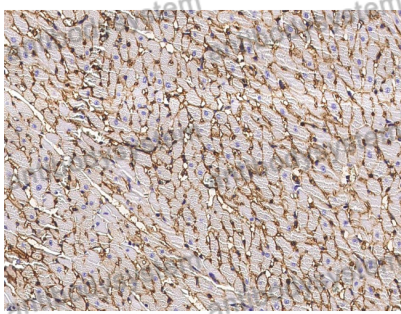
Various lysates were subjected to SDS PAGE followed by western blot with CD36 antibody (PHD19101) at 1 µg/ml.

Lane 1: RAW264.7

Second Ab: Goat Anti-Rabbit IgG H&L Polyclonal antibody, HRP (PTB96431) at 0.1 µg/mL.

Predict MW: 53 kDa

Observed MW: 88 kDa



Immunohistochemical

Immunohistochemical analysis of rat heart stained for CD36 with PHD19101.