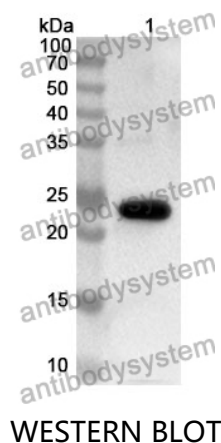


Anti-CREB1 Polyclonal Antibody

Summary

Catalog No.	PHD15901
Host species	Rabbit
Tested applications	ELISA: 1:4000-1:8000, IHC: 1:50-1:100, WB: 1:1000-1:4000
Species reactivity	Human, Mouse, Rat
Immunogen	E. coli - derived recombinant Human CREB1 (Lys122-Asp327).
Form	Liquid
Storage buffer	0.01M PBS, pH 7.4, 50% Glycerol, 0.05% Proclin 300.
Clonality	Polyclonal
Isotype	IgG
Applications	ELISA, IHC, WB
Target	cAMP-responsive element-binding protein 1, CREB-1, CREB1, Cyclic AMP-responsive element-binding protein 1
Purification	Purified by antigen affinity column.
Accession	P16220
Stability and Storage	Use a manual defrost freezer and avoid repeated freeze thaw cycles. Store at 2 to 8°C for frequent use. Store at -20 to -80°C for twelve months from the date of receipt.
Note	For research use only.

Data Image



Recombinant Protein lysates were subjected to SDS PAGE followed by western blot with CREB1 antibody (PHD15901) at 1 μ g/ml.

Lane 1: Recombinant protein

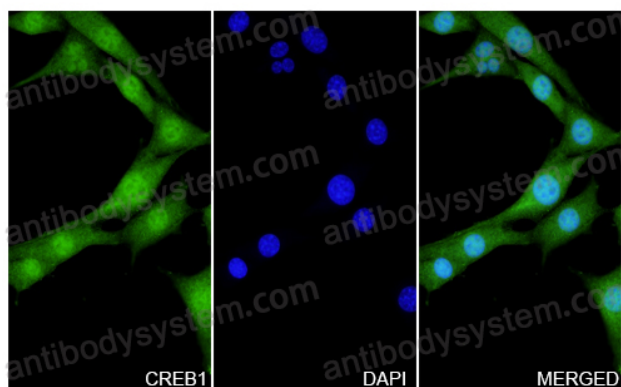
Second Ab: Goat Anti-Rabbit IgG H&L Polyclonal antibody, HRP (PTB96431) at 0.1 μ g/mL.

Predict MW: 25 kDa

Observed MW: 25 kDa

CREB1 in NIH3T3 Cell Line.

The NIH3T3 cells were fixed with 4% paraformaldehyde (20 min), and then blocked with 5% goat serum for 1h. And the cells were incubated for 2h at 37°C with CREB1 (PHD15901) at 7.6 μ g/ml. The section was then incubated with Goat Anti-Rabbit IgG (Alexa Fluor-488) preabsorbed at 1/100 dilution (Shown in green) for 1 hour at room temperature. Nuclear DNA was labelled with DAPI (shown in blue).



Immunocytochemistry/ Immunofluorescence