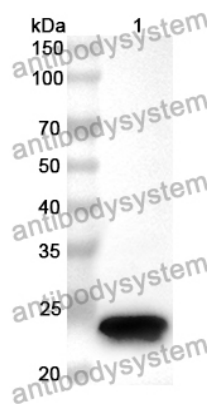


Anti-Human NABP1 Polyclonal Antibody

Summary

Catalog No.	PHK76601
Host species	Rabbit
Tested applications	ELISA: 1:4000-1:8000, IHC: 1:50-1:100, WB: 1:1000-1:4000
Species reactivity	Human
Immunogen	E. coli - derived recombinant Human NABP1 (Asn22-Gly126).
Form	Liquid
Storage buffer	0.01M PBS, pH 7.4, 50% Glycerol, 0.05% Proclin 300.
Clonality	Polyclonal
Isotype	IgG
Applications	ELISA, IHC, WB
Target	Nucleic acid-binding protein 1, SOSS complex subunit B2, OBFC2A, Single-stranded DNA-binding protein 2, Sensor of ssDNA subunit B2, hSSB2, SSB2, SOSS-B2, NABP1, Oligonucleotide/oligosaccharide-binding fold-containing protein 2A, Sensor of single-strand DNA complex subunit B2
Purification	Purified by antigen affinity column.
Accession	Q96AH0
Stability and Storage	Use a manual defrost freezer and avoid repeated freeze thaw cycles. Store at 2 to 8°C for frequent use. Store at -20 to -80°C for twelve months from the date of receipt.
Note	For research use only.

Data Image



Western Blot

Recombinant Protein lysates were subjected to SDS PAGE followed by western blot with NABP1 antibody (PHK76601) at 1 μ g/ml.

Lane 1: Recombinant protein

Second Ab: Goat Anti-Rabbit IgG H&L Polyclonal antibody, HRP (PTB96431) at 0.1 μ g/mL.

Predict MW: 24 kDa

Observed MW: 24 kDa