

# Anti-Human GADD45GIP1 Polyclonal Antibody

## Summary

---

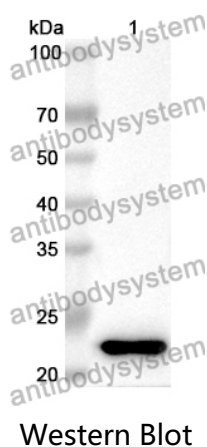
<b>Catalog No.</b>	PHK75801
<b>Host species</b>	Rabbit
<b>Tested applications</b>	ELISA: 1:4000-1:8000, IHC: 1:50-1:100, WB: 1:1000-1:4000
<b>Species reactivity</b>	Human
<b>Immunogen</b>	E. coli - derived recombinant Human GADD45GIP1 (Thr47-Ser222).
<b>Form</b>	Liquid
<b>Storage buffer</b>	0.01M PBS, pH 7.4, 50% Glycerol, 0.05% Proclin 300.
<b>Clonality</b>	Polyclonal
<b>Isotype</b>	IgG
<b>Applications</b>	ELISA, IHC, WB
<b>Target</b>	CRIF1, GADD45GIP1, 39S ribosomal protein L59, mitochondrial, PLINP1, PLINP, MRP-L59, CKII beta-associating protein, Papillomavirus L2-interacting nuclear protein 1, PLINP-1, PRG6, CR6-interacting factor 1, MRPL59, p53-responsive gene 6 protein, Growth arrest and DNA damage-inducible proteins-interacting protein 1, Mitochondrial large ribosomal subunit protein mL64
<b>Purification</b>	Purified by antigen affinity column.
<b>Accession</b>	Q8TAE8
<b>Stability and Storage</b>	Use a manual defrost freezer and avoid repeated freeze thaw cycles. Store at 2 to 8°C for frequent use. Store at -20 to -80°C for twelve months from the date of receipt.

**Note**

For research use only.

## Data Image

---



Recombinant Protein lysates were subjected to SDS PAGE followed by western blot with GADD45GIP1 antibody (PHK75801) at 1 µg/ml.

Lane 1: Recombinant protein

Second Ab: Goat Anti-Rabbit IgG H&L Polyclonal antibody, HRP (PTB96431) at 0.1 µg/mL.

Predict MW: 23 kDa

Observed MW: 23 kDa