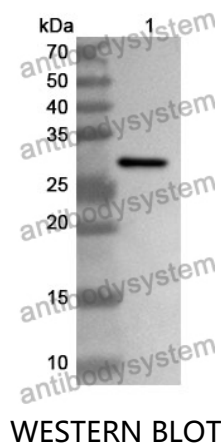


Anti-CD1E Polyclonal Antibody

Summary

Catalog No.	PHD12801
Host species	Rabbit
Tested applications	ELISA: 1:4000-1:8000, IHC: 1:50-1:100, WB: 1:1000-1:4000
Species reactivity	Human
Immunogen	E. coli - derived recombinant Human CD1E (Met39-Ala276).
Form	Liquid
Storage buffer	0.01M PBS, pH 7.4, 50% Glycerol, 0.05% Proclin 300.
Clonality	Polyclonal
Isotype	IgG
Applications	ELISA, IHC, WB
Target	CD1e,T-cell surface glycoprotein CD1e,membrane-associated,R2G1,CD1E,hCD1e,sCD1e
Purification	Purified by antigen affinity column.
Accession	P15812
Stability and Storage	Use a manual defrost freezer and avoid repeated freeze thaw cycles. Store at 2 to 8°C for frequent use. Store at -20 to -80°C for twelve months from the date of receipt.
Note	For research use only.

Data Image



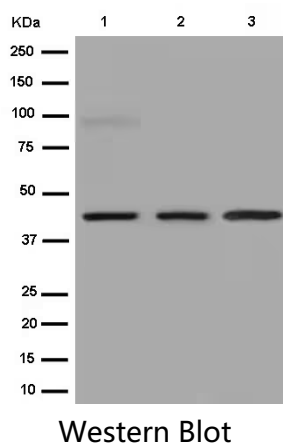
Recombinant Protein lysates were subjected to SDS PAGE followed by western blot with CD1E antibody (PHD12801) at 1 µg/ml.

Lane 1: Recombinant protein

Second Ab: Goat Anti-Rabbit IgG H&L Polyclonal antibody, HRP (PTB96431) at 0.1 µg/mL.

Predict MW: 29 kDa

Observed MW: 29 kDa



Various lysates were subjected to SDS PAGE followed by western blot with CD1E antibody (PHD12801) at 1 µg/ml.

Lane 1: HUVEC

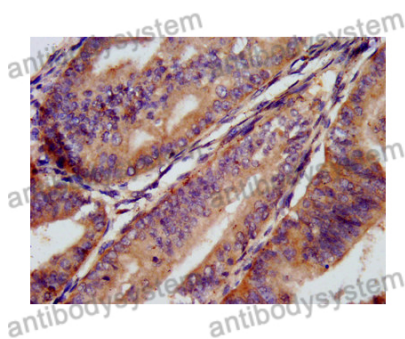
Lane 2: HepG2

Lane 3: Jurkat

Second Ab: Goat Anti-Rabbit IgG H&L Polyclonal antibody, HRP (PTB96431) at 0.1 µg/mL.

Predict MW: 44 kDa

Observed MW: 44 kDa



Immunohistochemical analysis of human endometrial cancer tissue stained for CD1E with PHD12801.

Immunohistochemical