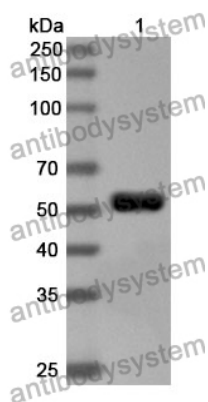


Anti-Human KDM6B Polyclonal Antibody

Summary

Catalog No.	PHA39501
Host species	Rabbit
Tested applications	ELISA: 1:4000-1:8000, IHC: 1:50-1:100, WB: 1:1000-1:4000
Species reactivity	Human
Immunogen	E. coli - derived recombinant Human KDM6B (Pro1186-Arg1643).
Form	Liquid
Storage buffer	0.01M PBS, pH 7.4, 50% Glycerol, 0.05% Proclin 300.
Clonality	Polyclonal
Isotype	IgG
Applications	ELISA, IHC, WB
Target	JMJD3, [histone H3]-trimethyl-L-lysine(27) demethylase 6B, Jumonji domain-containing protein 3, KDM6B, JmjC domain-containing protein 3, KIAA0346, Lysine demethylase 6B, Lysine-specific demethylase 6B
Purification	Purified by antigen affinity column.
Accession	O15054
Stability and Storage	Use a manual defrost freezer and avoid repeated freeze thaw cycles. Store at 2 to 8°C for frequent use. Store at -20 to -80°C for twelve months from the date of receipt.
Note	For research use only.

Data Image



Western Blot

Recombinant Protein lysates were subjected to SDS PAGE followed by western blot with KDM6B antibody (PHA39501) at 1 μ g/ml.

Lane 1: Recombinant protein

Second Ab: Goat Anti-Rabbit IgG H&L Polyclonal antibody, HRP (PTB96431) at 0.1 μ g/mL.

Predict MW: 54 kDa

Observed MW: 54 kDa