

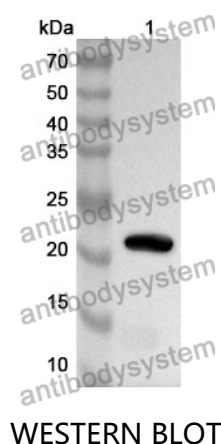
# Anti-MMP9 Polyclonal Antibody

## Summary

---

|                              |   |
|------------------------------|---|
| <b>Catalog No.</b>           | PHD06801  |
| <b>Host species</b>          | Rabbit  |
| <b>Tested applications</b>   | ELISA: 1:4000-1:8000, IHC: 1:50-1:100, IF:1:50-1:100, WB: 1:500-1:4000  |
| <b>Species reactivity</b>    | Human, Mouse, Rat   |
| <b>Immunogen</b>             | E. coli - derived recombinant Human MMP9 (Val217-Asp390).   |
| <b>Form</b>                  | Liquid  |
| <b>Storage buffer</b>        | 0.01M PBS, pH 7.4, 50% Glycerol, 0.05% Proclin 300.   |
| <b>Concentration</b>         | 0.53mg/ml   |
| <b>Clonality</b>             | Polyclonal  |
| <b>Isotype</b>               | IgG   |
| <b>Applications</b>          | ELISA, IHC, WB, IF  |
| <b>Target</b>                | Matrix metalloproteinase-9,CLG4B,GELB,92 kDa type IV collagenase,92 kDa gelatinase,Gelatinase B,MMP9,MMP-9  |
| <b>Purification</b>          | Purified by antigen affinity column.  |
| <b>Accession</b>             | P14780  |
| <b>Stability and Storage</b> | Use a manual defrost freezer and avoid repeated freeze thaw cycles. Store at 2 to 8°C for frequent use. Store at -20 to -80°C for twelve months from the date of receipt. |
| <b>Note</b>                  | For research use only.  |

## Data Image



Recombinant Protein lysates were subjected to SDS PAGE followed by western blot with MMP9 antibody (PHD06801) at 1 µg/ml.

Lane 1: Recombinant protein

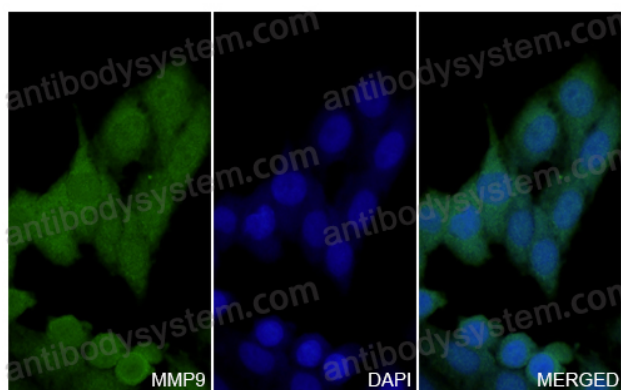
Second Ab: Goat Anti-Rabbit IgG H&L Polyclonal antibody, HRP (PTB96431) at 0.1 µg/mL.

Predict MW: 21 kDa

Observed MW: 21 kDa

MMP9 in HepG2 Cell Line.

The HepG2 cells were fixed with 4% paraformaldehyde (20 min), and then blocked with 5% goat serum for 1h. And the cells were incubated for 2h at 37°C with MMP9 (PHD06801) at 10.6 µg/ml. The section was then incubated with Goat Anti-Rabbit IgG (Alexa Fluor-488) preabsorbed at 1/100 dilution (Shown in green) for 1 hour at room temperature. Nuclear DNA was labelled with DAPI (shown in blue).



Immunocytochemistry/ Immunofluorescence