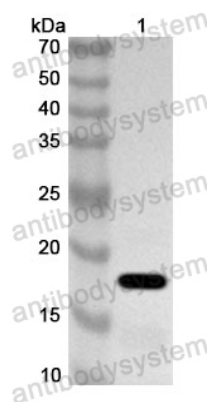


Anti-Human BHLHE40 Polyclonal Antibody

Summary

Catalog No.	PHA20101
Host species	Rabbit
Tested applications	ELISA: 1:4000-1:8000, IHC: 1:50-1:100, WB: 1:1000-1:4000
Species reactivity	Human
Immunogen	E. coli - derived recombinant Human BHLHE40 (Ser46-Gly186).
Form	Liquid
Storage buffer	0.01M PBS, pH 7.4, 50% Glycerol, 0.05% Proclin 300.
Clonality	Polyclonal
Isotype	IgG
Applications	ELISA, IHC, WB
Target	DEC1, bHLHe40, Differentially expressed in chondrocytes protein 1, Class E basic helix-loop-helix protein 40, Class B basic helix-loop-helix protein 2, STRA13, SHARP2, SHARP-2, bHLHb2, Enhancer-of-split and hairy-related protein 2, BHLHB2, BHLHE40, Stimulated by retinoic acid gene 13 protein
Purification	Purified by antigen affinity column.
Accession	O14503
Stability and Storage	Use a manual defrost freezer and avoid repeated freeze thaw cycles. Store at 2 to 8°C for frequent use. Store at -20 to -80°C for twelve months from the date of receipt.
Note	For research use only.

Data Image



Western Blot

Recombinant Protein lysates were subjected to SDS PAGE followed by western blot with BHLHE40 antibody (PHA20101) at 1 μ g/ml.

Lane 1: Recombinant protein

Second Ab: Goat Anti-Rabbit IgG H&L Polyclonal antibody, HRP (PTB96431) at 0.1 μ g/mL.

Predict MW: 18 kDa

Observed MW: 18 kDa