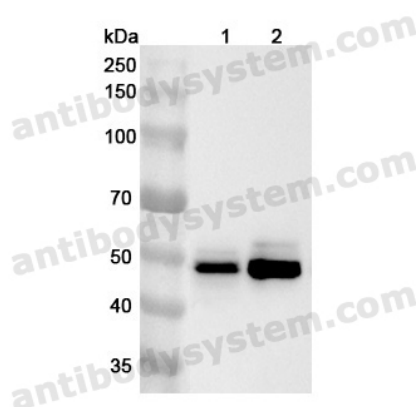


Anti-Human ALDH3A2 Polyclonal Antibody

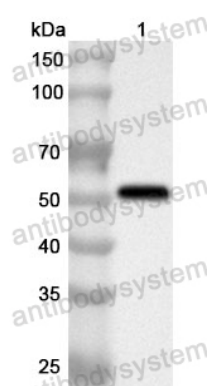
Summary

Catalog No.	PHE84401
Host species	Rabbit
Tested applications	ELISA: 1:4000-1:8000, IHC: 1:50-1:100, WB: 1:1000-1:4000
Species reactivity	Human
Immunogen	E. coli - derived recombinant Human ALDH3A2 (Met1-Lys428).
Form	Liquid
Storage buffer	0.01M PBS, pH 7.4, 50% Glycerol, 0.05% Proclin 300.
Clonality	Polyclonal
Isotype	IgG
Applications	ELISA, IHC, WB
Target	ALDH10, Aldehyde dehydrogenase family 3 member A2, Aldehyde dehydrogenase 10, FALDH, Microsomal aldehyde dehydrogenase, Fatty aldehyde dehydrogenase, ALDH3A2
Purification	Purified by antigen affinity column.
Accession	P51648
Stability and Storage	Use a manual defrost freezer and avoid repeated freeze thaw cycles. Store at 2 to 8°C for frequent use. Store at -20 to -80°C for twelve months from the date of receipt.
Note	For research use only.

Data Image



Western Blot



Western Blot

Various lysates were subjected to SDS PAGE followed by western blot with ALDH3A2 antibody (PHE84401) at 1 μ g/ml.

Lane 1: MCF-7 cell lysate

Lane 2: Hela cell lysate

Second Ab: Goat Anti-Rabbit IgG H&L Polyclonal antibody, HRP (PTB96431) at 0.1 μ g/mL.

Predict MW: 55 kDa

Observed MW: 50 kDa

Recombinant Protein lysates were subjected to SDS PAGE followed by western blot with ALDH3A2 antibody (PHE84401) at 1 μ g/ml.

Lane 1: Recombinant Protein

Second Ab: Goat Anti-Rabbit IgG H&L Polyclonal antibody, HRP (PTB96431) at 0.1 μ g/mL.

Predict MW: 50 kDa

Observed MW: 50 kDa