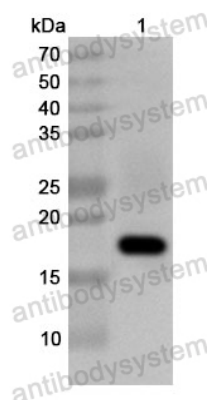


Anti-Human SCFD1 Polyclonal Antibody

Summary

Catalog No.	PHK64601
Host species	Rabbit
Tested applications	ELISA: 1:4000-1:8000, IHC: 1:50-1:100, WB: 1:1000-1:4000
Species reactivity	Human
Immunogen	E. coli - derived recombinant Human SCFD1 (Ala12-Asn152).
Form	Liquid
Storage buffer	0.01M PBS, pH 7.4, 50% Glycerol, 0.05% Proclin 300.
Clonality	Polyclonal
Isotype	IgG
Applications	ELISA, IHC, WB
Target	KIAA0917, Sly1p, C14orf163, STXBP1L2, Sec1 family domain-containing protein 1, SCFD1, Syntaxin-binding protein 1-like 2, SLY1 homolog
Purification	Purified by antigen affinity column.
Accession	Q8WVM8
Stability and Storage	Use a manual defrost freezer and avoid repeated freeze thaw cycles. Store at 2 to 8°C for frequent use. Store at -20 to -80°C for twelve months from the date of receipt.
Note	For research use only.

Data Image



Western Blot

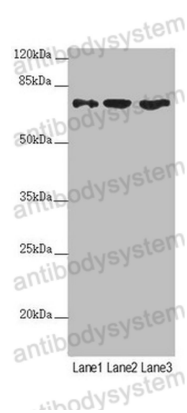
Recombinant Protein lysates were subjected to SDS PAGE followed by western blot with SCFD1 antibody (PHK64601) at 1 μ g/ml.

Lane 1: Recombinant protein

Second Ab: Goat Anti-Rabbit IgG H&L Polyclonal antibody, HRP (PTB96431) at 0.1 μ g/mL.

Predict MW: 18 kDa

Observed MW: 18 kDa



Western Blot

Various lysates were subjected to SDS PAGE followed by western blot with SCFD1 antibody (PHK64601) at 1 μ g/ml.

Lane 1: mouse liver

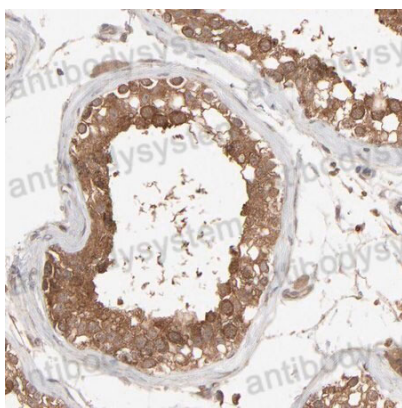
Lane 2: HeLa

Lane 3: A549

Second Ab: Goat Anti-Rabbit IgG H&L Polyclonal antibody, HRP (PTB96431) at 0.1 μ g/mL.

Predict MW: 72 kDa

Observed MW: 72 kDa



Immunohistochemical

Immunohistochemical analysis of human testis stained for SCFD1 with PHK64601.