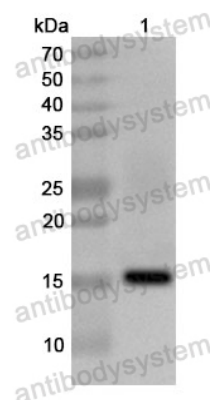


Anti-Human NPC2 Polyclonal Antibody

Summary

Catalog No.	PHF46401
Host species	Rabbit
Tested applications	ELISA: 1:4000-1:8000, IHC: 1:50-1:100, WB: 1:1000-1:4000
Species reactivity	Human
Immunogen	E. coli - derived recombinant Human NPC2 (Asp31-Leu151).
Form	Liquid
Storage buffer	0.01M PBS, pH 7.4, 50% Glycerol, 0.05% Proclin 300.
Clonality	Polyclonal
Isotype	IgG
Applications	ELISA, IHC, WB
Target	HE1, NPC intracellular cholesterol transporter 2, He1, Epididymal secretory protein E1, Human epididymis-specific protein 1, NPC2, Niemann-Pick disease type C2 protein
Purification	Purified by antigen affinity column.
Accession	P61916
Stability and Storage	Use a manual defrost freezer and avoid repeated freeze thaw cycles. Store at 2 to 8°C for frequent use. Store at -20 to -80°C for twelve months from the date of receipt.
Note	For research use only.

Data Image



Western Blot

Recombinant Protein lysates were subjected to SDS PAGE followed by western blot with NPC2 antibody (PHF46401) at 1 μ g/ml.

Lane 1: Recombinant protein

Second Ab: Goat Anti-Rabbit IgG H&L Polyclonal antibody, HRP (PTB96431) at 0.1 μ g/mL.

Predict MW: 16 kDa

Observed MW: 16 kDa