

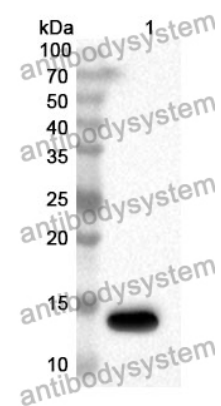
# Anti-MIF Polyclonal Antibody

## Summary

---

<b>Catalog No.</b>	PHD03401
<b>Host species</b>	Rabbit
<b>Tested applications</b>	ELISA: 1:4000-1:8000, IHC: 1:50-1:100, WB: 1:1000-1:4000
<b>Species reactivity</b>	Human, Mouse, Rat
<b>Immunogen</b>	E. coli - derived recombinant Human MIF (Met1-Ala115).
<b>Form</b>	Liquid
<b>Storage buffer</b>	0.01M PBS, pH 7.4, 50% Glycerol, 0.05% Proclin 300.
<b>Clonality</b>	Polyclonal
<b>Isotype</b>	IgG
<b>Applications</b>	ELISA, IHC, WB
<b>Target</b>	MIF,L-dopachrome isomerase,L-dopachrome tautomerase,GIF,Macrophage migration inhibitory factor,MMIF,Phenylpyruvate tautomerase,Glycosylation-inhibiting factor,GLIF
<b>Purification</b>	Purified by antigen affinity column.
<b>Accession</b>	P14174
<b>Stability and Storage</b>	Use a manual defrost freezer and avoid repeated freeze thaw cycles. Store at 2 to 8°C for frequent use. Store at -20 to -80°C for twelve months from the date of receipt.
<b>Note</b>	For research use only.

## Data Image



WESTERN BLOT

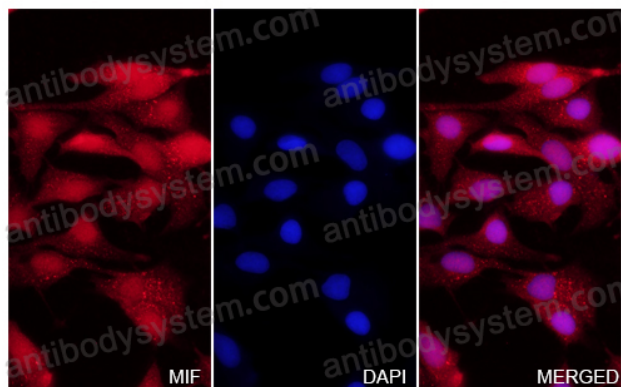
Recombinant Protein lysates were subjected to SDS PAGE followed by western blot with MIF antibody (PHD03401) at 1 µg/ml.

Lane 1: Recombinant protein

Second Ab: Goat Anti-Rabbit IgG H&L Polyclonal antibody, HRP (PTB96431) at 0.1 µg/mL.

Predict MW: 15 kDa

Observed MW: 15 kDa



Immunocytochemistry/ Immunofluorescence

MIF in Hela Cell Line.

The Hela cells were fixed with 4% paraformaldehyde (20 min), and then blocked with 5% goat serum for 1h. And the cells were incubated for 2h at 37°C with MIF (PHD03401) at 2.5 µg/ml. The section was then incubated with Goat Anti-Rabbit IgG (Alexa Fluor-594) preabsorbed at 1/100 dilution (Shown in red) for 1 hour at room temperature. Nuclear DNA was labelled with DAPI (shown in blue).