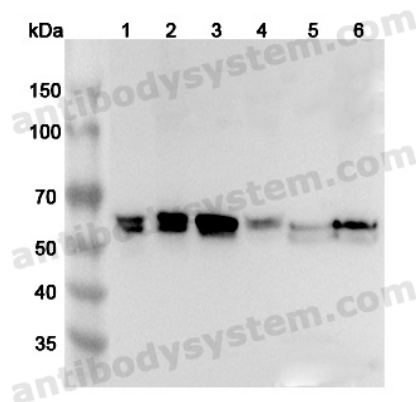


Anti-Human NAP1L4 Polyclonal Antibody

Summary

Catalog No.	PHK55301
Host species	Rabbit
Tested applications	ELISA: 1:4000-1:8000, IHC: 1:50-1:100, WB: 1:1000-1:4000
Species reactivity	Human
Immunogen	E. coli - derived recombinant Human NAP1L4 (Glu161-Glu347).
Form	Liquid
Storage buffer	0.01M PBS, pH 7.4, 50% Glycerol, 0.05% Proclin 300.
Clonality	Polyclonal
Isotype	IgG
Applications	ELISA, IHC, WB
Target	NAP-2, NAP2, Nucleosome assembly protein 2, Nucleosome assembly protein 1-like 4, NAP1L4
Purification	Purified by antigen affinity column.
Accession	Q99733
Stability and Storage	Use a manual defrost freezer and avoid repeated freeze thaw cycles. Store at 2 to 8°C for frequent use. Store at -20 to -80°C for twelve months from the date of receipt.
Note	For research use only.

Data Image



Western Blot

Various lysates were subjected to SDS PAGE followed by western blot with NAP1L4 antibody (PHK55301) at 1 μ g/ml.

Lane 1: NIH3T3 cell lysate

Lane 2: 293T cell lysate

Lane 3: Mouse testis lysate

Lane 4: Mouse liver lysate

Lane 5: Mouse heart lysate

Lane 6: Rat testis lysate

Second Ab: Goat Anti-Rabbit IgG H&L Polyclonal antibody, HRP (PTB96431) at 0.1 μ g/mL.

Predict MW: 43 kDa

Observed MW: 52 KDa