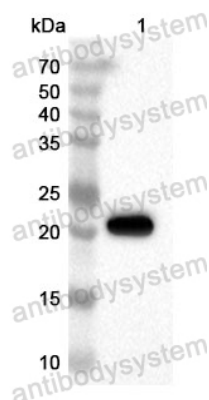


Anti-Human SATB2 Polyclonal Antibody

Summary

Catalog No.	PHK53201
Host species	Rabbit
Tested applications	ELISA: 1:4000-1:8000, IHC: 1:50-1:100, WB: 1:1000-1:4000
Species reactivity	Human
Immunogen	E. coli - derived recombinant Human SATB2 (Gly57-Lys231).
Form	Liquid
Storage buffer	0.01M PBS, pH 7.4, 50% Glycerol, 0.05% Proclin 300.
Clonality	Polyclonal
Isotype	IgG
Applications	ELISA, IHC, WB
Target	SATB2, DNA-binding protein SATB2, KIAA1034, Special AT-rich sequence-binding protein 2
Purification	Purified by antigen affinity column.
Accession	Q9UPW6
Stability and Storage	Use a manual defrost freezer and avoid repeated freeze thaw cycles. Store at 2 to 8°C for frequent use. Store at -20 to -80°C for twelve months from the date of receipt.
Note	For research use only.

Data Image



Western Blot

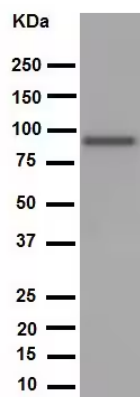
Recombinant Protein lysates were subjected to SDS PAGE followed by western blot with SATB2 antibody (PHK53201) at 1 μ g/ml.

Lane 1: Recombinant protein

Second Ab: Goat Anti-Rabbit IgG H&L Polyclonal antibody, HRP (PTB96431) at 0.1 μ g/mL.

Predict MW: 22 kDa

Observed MW: 22 kDa



Western Blot

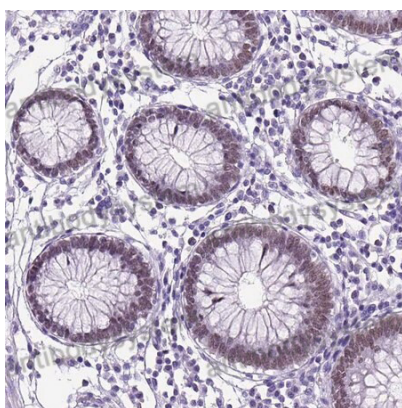
Various lysates were subjected to SDS PAGE followed by western blot with SATB2 antibody (PHK53201) at 1 μ g/ml.

Lane 1: SW1353

Second Ab: Goat Anti-Rabbit IgG H&L Polyclonal antibody, HRP (PTB96431) at 0.1 μ g/mL.

Predict MW: 83 kDa

Observed MW: 83 kDa



Immunohistochemical

Immunohistochemical analysis of human colon tissue stained for SATB2 with PHK53201.