

Anti-Human SFI1 Polyclonal Antibody

Summary

Catalog No.	PHK52801
Host species	Rabbit
Tested applications	ELISA: 1:4000-1:8000, IHC: 1:50-1:100, WB: 1:1000-1:4000
Species reactivity	Human
Immunogen	E. coli - derived recombinant Human SFI1 (Asp1148-Ala1232).
Form	Liquid
Storage buffer	0.01M PBS, pH 7.4, 50% Glycerol, 0.05% Proclin 300.
Clonality	Polyclonal
Isotype	IgG
Applications	ELISA, IHC, WB
Target	KIAA0542, hSFI1, Protein SFI1 homolog, SFI1
Purification	Purified by antigen affinity column.
Accession	A8K8P3
Stability and Storage	Use a manual defrost freezer and avoid repeated freeze thaw cycles. Store at 2 to 8°C for frequent use. Store at -20 to -80°C for twelve months from the date of receipt.
Note	For research use only.

Data Image



Recombinant Protein lysates were subjected to SDS PAGE followed by western blot with SFI1 antibody (PHK52801) at 1 µg/ml.

Lane 1: Recombinant protein

Second Ab: Goat Anti-Rabbit IgG H&L Polyclonal antibody, HRP (PTB96431) at 0.1 µg/mL.

Predict MW: 12 kDa

Observed MW: 12 kDa

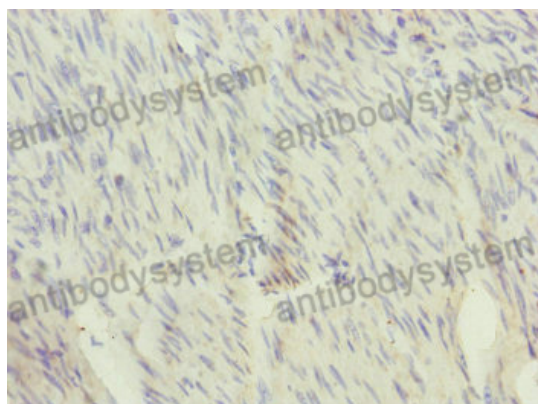
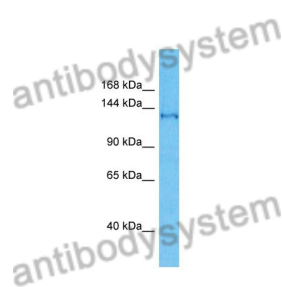
Various lysates were subjected to SDS PAGE followed by western blot with SFI1 antibody (PHK52801) at 1 µg/ml.

Lane 1: Jurkat

Second Ab: Goat Anti-Rabbit IgG H&L Polyclonal antibody, HRP (PTB96431) at 0.1 µg/mL.

Predict MW: 134 kDa

Observed MW: 134 kDa



Immunohistochemical

Immunohistochemical analysis of human bladder cancer stained for SFI1 with PHK52801.