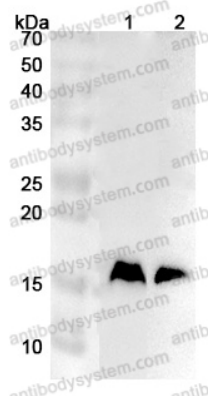


Anti-Human RPS19 Polyclonal Antibody

Summary

Catalog No.	PHE23601
Host species	Rabbit
Tested applications	ELISA: 1:4000-1:8000, IHC: 1:50-1:100, WB: 1:1000-1:4000
Species reactivity	Human
Immunogen	E. coli - derived recombinant Human RPS19 (Met1-His145).
Form	Liquid
Storage buffer	0.01M PBS, pH 7.4, 50% Glycerol, 0.05% Proclin 300.
Clonality	Polyclonal
Isotype	IgG
Applications	ELISA, IHC, WB
Target	40S ribosomal protein S19, Small ribosomal subunit protein eS19, RPS19
Purification	Purified by antigen affinity column.
Accession	P39019
Stability and Storage	Use a manual defrost freezer and avoid repeated freeze thaw cycles. Store at 2 to 8°C for frequent use. Store at -20 to -80°C for twelve months from the date of receipt.
Note	For research use only.

Data Image



Western Blot

Various lysates were subjected to SDS PAGE followed by western blot with RPS19 antibody (PHE23601) at 1 μ g/ml.

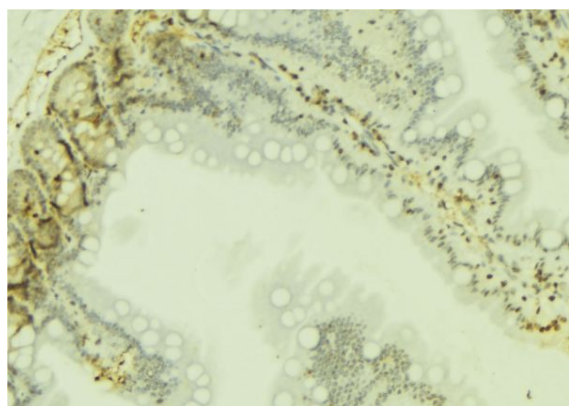
Lane 1: Mouse liver lysate

Lane 2: Rat liver lysate

Second Ab: Goat Anti-Rabbit IgG H&L Polyclonal antibody, HRP (PTB96431) at 0.1 μ g/mL.

Predict MW: 16 kDa

Observed MW: 16 kDa



Immunohistochemical

Immunohistochemical analysis of mouse colon stained for RPS19 with PHE23601.