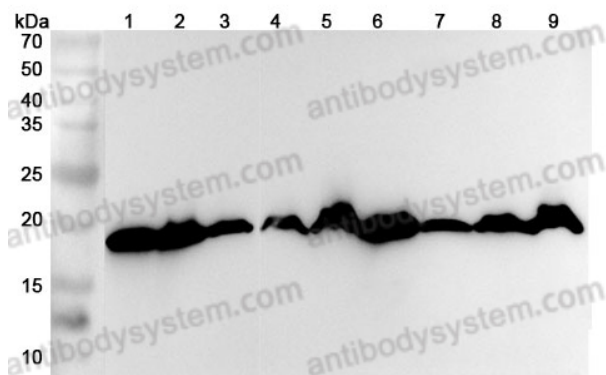


Anti-Human RPL23A Polyclonal Antibody

Summary

Catalog No.	PHF52901
Host species	Rabbit
Tested applications	ELISA: 1:4000-1:8000, IHC: 1:50-1:100, WB: 1:1000-1:4000
Species reactivity	Human
Immunogen	E. coli - derived recombinant Human RPL23A (Lys70-Ile156).
Form	Liquid
Storage buffer	0.01M PBS, pH 7.4, 50% Glycerol, 0.05% Proclin 300.
Clonality	Polyclonal
Isotype	IgG
Applications	ELISA, IHC, WB
Target	Large ribosomal subunit protein uL23, RPL23A, 60S ribosomal protein L23a
Purification	Purified by antigen affinity column.
Accession	P62750
Stability and Storage	Use a manual defrost freezer and avoid repeated freeze thaw cycles. Store at 2 to 8°C for frequent use. Store at -20 to -80°C for twelve months from the date of receipt.
Note	For research use only.

Data Image



WESTERN BLOT

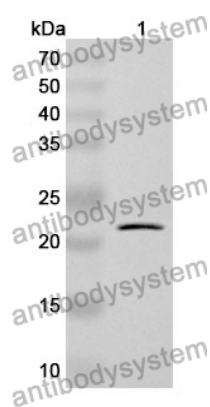
Various lysates were subjected to SDS PAGE followed by western blot with RPL23A antibody (PHF52901) at 1 μ g/mL .

Lane 1: 293T cell lysate
 Lane 2: Jurkat cell lysate
 Lane 3: U87 cell lysate
 Lane 4: Mouse brain lysate
 Lane 5: Mouse lung lysate
 Lane 6: Mouse liver lysate
 Lane 7: Rat brain lysate
 Lane 8: Rat lung lysate
 Lane 9: Rat liver lysate

Second Ab: Goat Anti-Rabbit IgG H&L Polyclonal antibody, HRP (PTB96431) at 0.1 μ g/mL.

Predict MW: 18 kDa

Observed MW: 20 kDa



Western Blot

Recombinant Protein lysates were subjected to SDS PAGE followed by western blot with RPL23A antibody (PHF52901) at 1 μ g/ml.

Lane 1: Recombinant protein

Second Ab: Goat Anti-Rabbit IgG H&L Polyclonal antibody, HRP (PTB96431) at 0.1 μ g/mL.

Predict MW: 22 kDa

Observed MW: 22 kDa