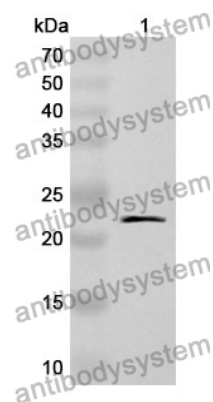


Anti-Human RBM39 Polyclonal Antibody

Summary

Catalog No.	PHG80601
Host species	Rabbit
Tested applications	ELISA: 1:4000-1:8000, IHC: 1:50-1:100, WB: 1:1000-1:4000
Species reactivity	Human
Immunogen	E. coli - derived recombinant Human RBM39 (Thr146-Val326).
Form	Liquid
Storage buffer	0.01M PBS, pH 7.4, 50% Glycerol, 0.05% Proclin 300.
Clonality	Polyclonal
Isotype	IgG
Applications	ELISA, IHC, WB
Target	CAPER alpha, RNA-binding protein 39, RNA-binding region-containing protein 2, CAPERalpha, HCC1, RNPC2, RBM39, RNA-binding motif protein 39, Hepatocellular carcinoma protein 1, Splicing factor HCC1
Purification	Purified by antigen affinity column.
Accession	Q14498
Stability and Storage	Use a manual defrost freezer and avoid repeated freeze thaw cycles. Store at 2 to 8°C for frequent use. Store at -20 to -80°C for twelve months from the date of receipt.
Note	For research use only.

Data Image



Western Blot

Recombinant Protein lysates were subjected to SDS PAGE followed by western blot with RBM39 antibody (PHG80601) at 1 μ g/ml.

Lane 1: Recombinant protein

Second Ab: Goat Anti-Rabbit IgG H&L Polyclonal antibody, HRP (PTB96431) at 0.1 μ g/mL.

Predict MW: 22 kDa

Observed MW: 22 kDa