

Anti-Human LGR6 Polyclonal Antibody

Summary

Catalog No.	PHK52201
Host species	Rabbit
Tested applications	ELISA: 1:4000-1:8000, IHC: 1:50-1:100, WB: 1:1000-1:4000
Species reactivity	Human
Immunogen	E. coli - derived recombinant Human LGR6 (Ala37-Gly483).
Form	Liquid
Storage buffer	0.01M PBS, pH 7.4, 50% Glycerol, 0.05% Proclin 300.
Clonality	Polyclonal
Isotype	IgG
Applications	ELISA, IHC, WB
Target	Leucine-rich repeat-containing G-protein coupled receptor 6, LGR6
Purification	Purified by antigen affinity column.
Accession	Q9HBX8
Stability and Storage	Use a manual defrost freezer and avoid repeated freeze thaw cycles. Store at 2 to 8°C for frequent use. Store at -20 to -80°C for twelve months from the date of receipt.
Note	For research use only.

Data Image



Western Blot

Recombinant Protein lysates were subjected to SDS PAGE followed by western blot with LGR6 antibody (PHK52201) at 1 µg/ml.

Lane 1: Recombinant protein

Second Ab: Goat Anti-Rabbit IgG H&L Polyclonal antibody, HRP (PTB96431) at 0.1 µg/mL.

Predict MW: 52 kDa

Observed MW: 52 kDa

Various lysates were subjected to SDS PAGE followed by western blot with LGR6 antibody (PHK52201) at 1 µg/ml.

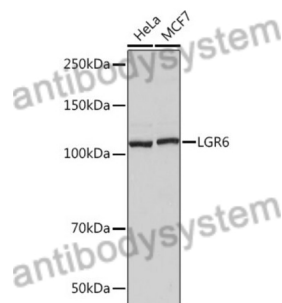
Lane 1: HeLa

Lane 2: MCF7

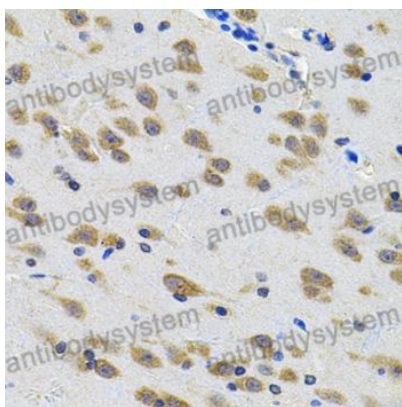
Second Ab: Goat Anti-Rabbit IgG H&L Polyclonal antibody, HRP (PTB96431) at 0.1 µg/mL.

Predict MW: 104 kDa

Observed MW: 104 kDa



Western Blot



Immunohistochemical

Immunohistochemical analysis of rat brain stained for LGR6 with PHK52201.