

# Anti-Human SEPTIN8 Polyclonal Antibody

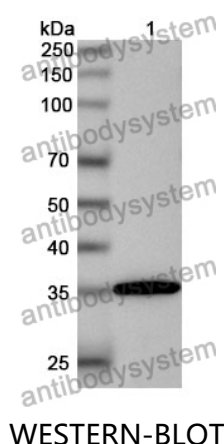
## Summary

---

<b>Catalog No.</b>	PHK51801
<b>Host species</b>	Rabbit
<b>Tested applications</b>	ELISA: 1:4000-1:8000, IHC: 1:50-1:100, WB: 1:1000-1:4000
<b>Species reactivity</b>	Human
<b>Immunogen</b>	E. coli - derived recombinant Human SEPTIN8 (Gly26-Gly309).
<b>Form</b>	Liquid
<b>Storage buffer</b>	0.01M PBS, pH 7.4, 50% Glycerol, 0.05% Proclin 300.
<b>Clonality</b>	Polyclonal
<b>Isotype</b>	IgG
<b>Applications</b>	ELISA, IHC, WB
<b>Target</b>	SEPT8, Septin-8, SEPTIN8, KIAA0202
<b>Purification</b>	Purified by antigen affinity column.
<b>Accession</b>	Q92599
<b>Stability and Storage</b>	Use a manual defrost freezer and avoid repeated freeze thaw cycles. Store at 2 to 8°C for frequent use. Store at -20 to -80°C for twelve months from the date of receipt.
<b>Note</b>	For research use only.

## Data Image

---



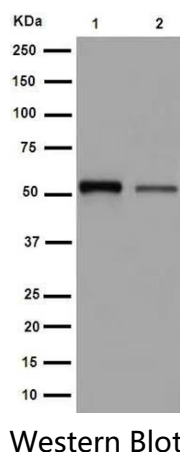
Recombinant Protein lysates were subjected to SDS PAGE followed by western blot with SEPTIN8 antibody (PHK51801) at 1 µg/ml.

Lane 1: Recombinant protein

Second Ab: Goat Anti-Rabbit IgG H&L Polyclonal antibody, HRP (PTB96431) at 0.1 µg/mL.

Predict MW: 35 kDa

Observed MW: 35 kDa



Various lysates were subjected to SDS PAGE followed by western blot with SEPTIN8 antibody (PHK51801) at 1 µg/ml.

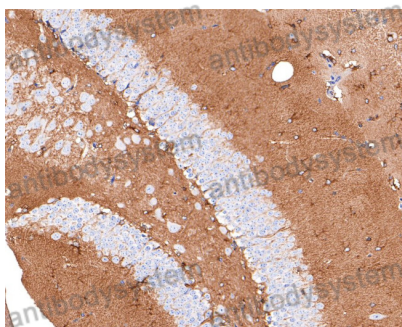
Lane 1: HCT-116

Lane 2: U-87 MG

Second Ab: Goat Anti-Rabbit IgG H&L Polyclonal antibody, HRP (PTB96431) at 0.1 µg/mL.

Predict MW: 56 kDa

Observed MW: 56 kDa



Immunohistochemical

Immunohistochemical analysis of mouse hippocampus stained for SEPTIN8 with PHK51801.