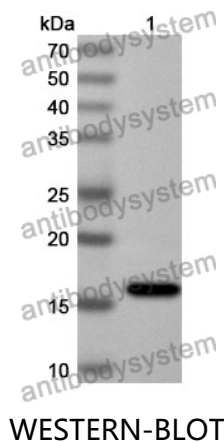


Anti-Human RPS12 Polyclonal Antibody

Summary

| | |
|------------------------------|---|
| Catalog No. | PHD67001 |
| Host species | Rabbit |
| Tested applications | ELISA: 1:4000-1:8000, IHC: 1:50-1:100, WB: 1:1000-1:4000 |
| Species reactivity | Human |
| Immunogen | E. coli - derived recombinant Human RPS12 (Met12-Lys132). |
| Form | Liquid |
| Storage buffer | 0.01M PBS, pH 7.4, 50% Glycerol, 0.05% Proclin 300. |
| Clonality | Polyclonal |
| Isotype | IgG |
| Applications | ELISA, IHC, WB |
| Target | Small ribosomal subunit protein eS12, RPS12, 40S ribosomal protein S12 |
| Purification | Purified by antigen affinity column. |
| Accession | P25398 |
| Stability and Storage | Use a manual defrost freezer and avoid repeated freeze thaw cycles. Store at 2 to 8°C for frequent use. Store at -20 to -80°C for twelve months from the date of receipt. |
| Note | For research use only. |

Data Image



WESTERN-BLOT

Recombinant Protein lysates were subjected to SDS PAGE followed by western blot with RPS12 antibody (PHD67001) at 1 µg/ml.

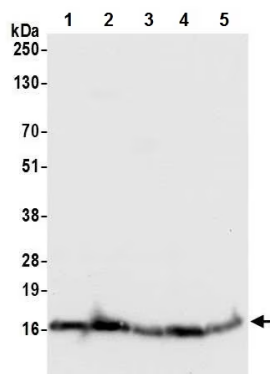
Lane 1: Recombinant protein

Second Ab: Goat Anti-Rabbit IgG H&L Polyclonal antibody, HRP (PTB96431) at 0.1 µg/mL.

Predict MW: 16 kDa

Observed MW: 16 kDa

Various lysates were subjected to SDS PAGE followed by western blot with RPS12 antibody (PHD67001) at 1 µg/ml.



Western Blot

Lane 1: Hela

Lane 2: HEK293T

Lane 3: Jurkat

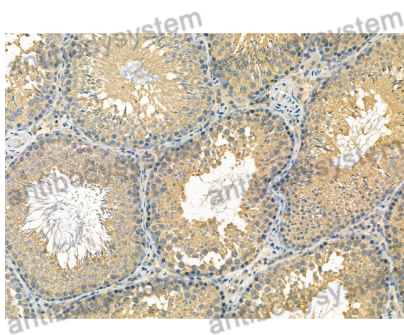
Lane 4: TCMK-1

Lane 5: NIH/3T3

Second Ab: Goat Anti-Rabbit IgG H&L Polyclonal antibody, HRP (PTB96431) at 0.1 µg/mL.

Predict MW: 15 kDa

Observed MW: 15 kDa



Immunohistochemical analysis of rat testis stained for RPS12 with PHD67001.

Immunohistochemical