

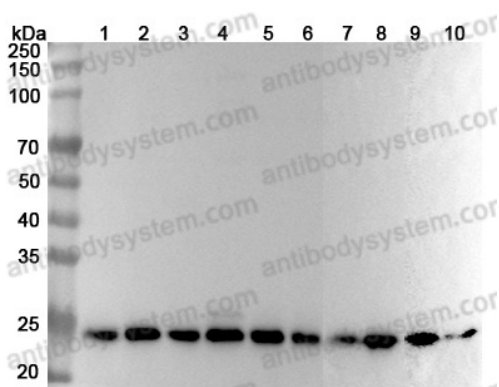
Anti-Human PSMB1 Polyclonal Antibody

Summary

Catalog No.	PHD40401
Host species	Rabbit
Tested applications	ELISA: 1:4000-1:8000, IHC: 1:50-1:100, WB: 1:1000-1:4000
Species reactivity	Human
Immunogen	E. coli - derived recombinant Human PSMB1 (Gly38-Asp241).
Form	Liquid
Storage buffer	0.01M PBS, pH 7.4, 50% Glycerol, 0.05% Proclin 300.
Clonality	Polyclonal
Isotype	IgG
Applications	ELISA, IHC, WB
Target	PSMB1, Macropain subunit C5, Multicatalytic endopeptidase complex subunit C5, Proteasome gamma chain, Proteasome subunit beta type-1, PSC5, Proteasome component C5
Purification	Purified by antigen affinity column.
Accession	P20618
Stability and Storage	Use a manual defrost freezer and avoid repeated freeze thaw cycles. Store at 2 to 8°C for frequent use. Store at -20 to -80°C for twelve months from the date of receipt.
Note	For research use only.

Data Image

Various lysates were subjected to SDS PAGE followed by western blot with PSMB1 antibody (PHD40401) at 1µg/ml.



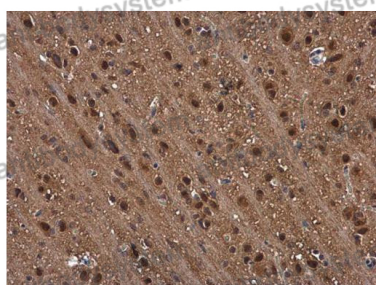
Western Blot

Lane 1: Hela cell lysate
Lane 2: HepG2 cell lysate
Lane 3: MCF-7 cell lysate
Lane 4: K562 cell lysate
Lane 5: THP-1 cell lysate
Lane 6: U937 cell lysate
Lane 7: Mouse spleen lysate
Lane 8: Mouse liver lysate
Lane 9: Rat spleen lysate
Lane 10: Rat liver lysate

Second Ab: Goat Anti-Rabbit IgG H&L Polyclonal antibody, HRP (PTB96431) at 0.1 µg/mL.

Predict MW: 26 kDa

Observed MW: 25 kDa



Immunohistochemical

Immunohistochemical analysis of rat brain tissue stained for PSMB1 with PHD40401.



Western Blot

Recombinant Protein lysates were subjected to SDS PAGE followed by western blot with PSMB1 antibody (PHD40401) at 1 µg/ml.

Lane 1: Recombinant Protein

Second Ab: Goat Anti-Rabbit IgG H&L Polyclonal antibody, HRP (PTB96431) at 0.1 µg/mL.

Predict MW: 25 kDa

Observed MW: 25 kDa