

# Anti-Human PSMA7 Polyclonal Antibody

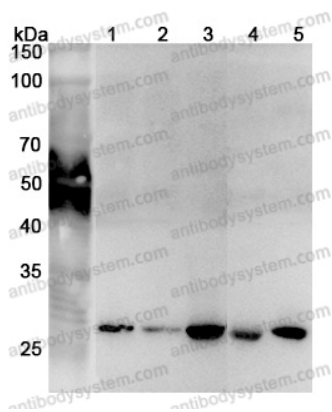
## Summary

---

<b>Catalog No.</b>	PHA31701
<b>Host species</b>	Rabbit
<b>Tested applications</b>	ELISA: 1:4000-1:8000, IHC: 1:50-1:100, WB: 1:1000-1:4000
<b>Species reactivity</b>	Human
<b>Immunogen</b>	E. coli - derived recombinant Human PSMA7 (His15-Ser248).
<b>Form</b>	Liquid
<b>Storage buffer</b>	0.01M PBS, pH 7.4, 50% Glycerol, 0.05% Proclin 300.
<b>Clonality</b>	Polyclonal
<b>Isotype</b>	IgG
<b>Applications</b>	ELISA, IHC, WB
<b>Target</b>	Proteasome subunit RC6-1, HSPC, Proteasome subunit XAPC7, Proteasome subunit alpha type-7, PSMA7
<b>Purification</b>	Purified by antigen affinity column.
<b>Accession</b>	O14818
<b>Stability and Storage</b>	Use a manual defrost freezer and avoid repeated freeze thaw cycles. Store at 2 to 8°C for frequent use. Store at -20 to -80°C for twelve months from the date of receipt.
<b>Note</b>	For research use only.

## Data Image

---



Western Blot

Various lysates were subjected to SDS PAGE followed by western blot with PSMA7 antibody (PHA31701) at 1 $\mu$ g/ml.

Lane 1: HepG2 cell lysate

Lane 2: Lncap cell lysate

Lane 3: Jurkat cell lysate

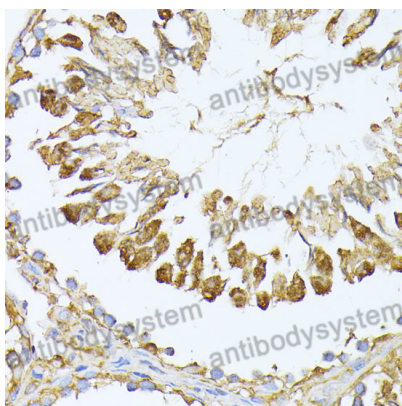
Lane 4: Mouse liver lysate

Lane 5: Mouse lung lysate

Second Ab: Goat Anti-Rabbit IgG H&L Polyclonal antibody, HRP (PTB96431) at 0.1  $\mu$ g/mL.

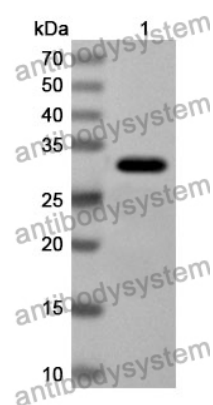
Predict MW: 28 kDa

Observed MW: 28 kDa



Immunohistochemical

Immunohistochemical analysis of rat testis stained for PSMA7 with PHA31701.



Western Blot

Recombinant Protein lysates were subjected to SDS PAGE followed by western blot with PSMA7 antibody (PHA31701) at 1  $\mu$ g/ml.

Lane 1: Recombinant Protein

Second Ab: Goat Anti-Rabbit IgG H&L Polyclonal antibody, HRP (PTB96431) at 0.1  $\mu$ g/mL.

Predict MW: 29 kDa

Observed MW: 29 kDa