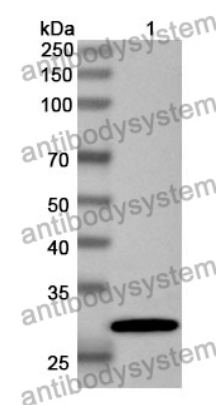


Anti-Human PDE4A Polyclonal Antibody

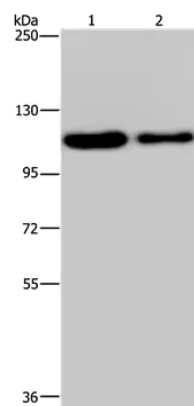
Summary

Catalog No.	PHD75301
Host species	Rabbit
Tested applications	ELISA: 1:4000-1:8000, IHC: 1:50-1:100, WB: 1:1000-1:4000
Species reactivity	Human
Immunogen	E. coli - derived recombinant Human PDE4A (Ser435-Ser686).
Form	Liquid
Storage buffer	0.01M PBS, pH 7.4, 50% Glycerol, 0.05% Proclin 300.
Clonality	Polyclonal
Isotype	IgG
Applications	ELISA, IHC, WB
Target	DPDE2, cAMP-specific 3',5'-cyclic phosphodiesterase 4A, PDE4A, PDE46
Purification	Purified by antigen affinity column.
Accession	P27815
Stability and Storage	Use a manual defrost freezer and avoid repeated freeze thaw cycles. Store at 2 to 8°C for frequent use. Store at -20 to -80°C for twelve months from the date of receipt.
Note	For research use only.

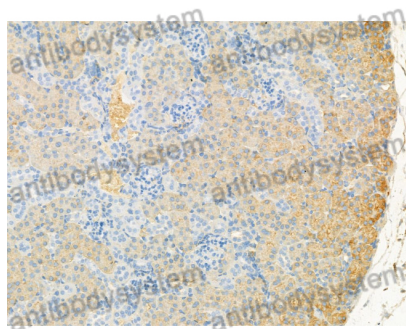
Data Image



WESTERN-BLOT



Western Blot



Immunohistochemical

Recombinant Protein lysates were subjected to SDS PAGE followed by western blot with PDE4A antibody (PHD75301) at 1 µg/ml.

Lane 1: Recombinant protein

Second Ab: Goat Anti-Rabbit IgG H&L Polyclonal antibody, HRP (PTB96431) at 0.1 µg/mL.

Predict MW: 31 kDa

Observed MW: 31 kDa

Various lysates were subjected to SDS PAGE followed by western blot with PDE4A antibody (PHD75301) at 1 µg/ml.

Lane 1: Hela

Lane 2: A172

Second Ab: Goat Anti-Rabbit IgG H&L Polyclonal antibody, HRP (PTB96431) at 0.1 µg/mL.

Predict MW: 98 kDa

Observed MW: 115 kDa

Immunohistochemical analysis of mouse kidney stained for PDE4A with PHD75301.