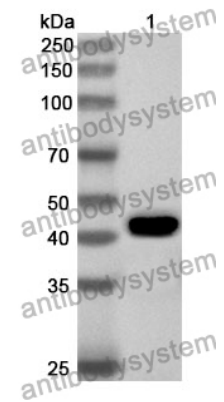


Anti-Human SERPINH1 Polyclonal Antibody

Summary

Catalog No.	PHE76601
Host species	Rabbit
Tested applications	ELISA: 1:4000-1:8000, IHC: 1:50-1:100, WB: 1:1000-1:4000
Species reactivity	Human
Immunogen	E. coli - derived recombinant Human SERPINH1 (Leu36-Leu418).
Form	Liquid
Storage buffer	0.01M PBS, pH 7.4, 50% Glycerol, 0.05% Proclin 300.
Clonality	Polyclonal
Isotype	IgG
Applications	ELISA, IHC, WB
Target	Colligin, CBP1, CBP2, SERPINH1, SERPINH2, Rheumatoid arthritis-related antigen RA-A47, Cell proliferation-inducing gene 14 protein, 47 kDa heat shock protein, Serpin H1, AsTP3, HSP47, Collagen-binding protein, Arsenic-transactivated protein 3
Purification	Purified by antigen affinity column.
Accession	P50454
Stability and Storage	Use a manual defrost freezer and avoid repeated freeze thaw cycles. Store at 2 to 8°C for frequent use. Store at -20 to -80°C for twelve months from the date of receipt.
Note	For research use only.

Data Image



WESTERN-BLOT

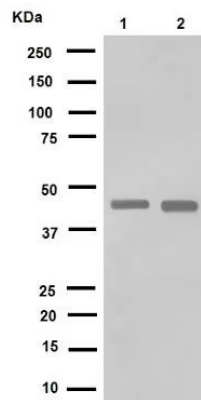
Recombinant Protein lysates were subjected to SDS PAGE followed by western blot with SERPINH1 antibody (PHE76601) at 1 µg/ml.

Lane 1: Recombinant protein

Second Ab: Goat Anti-Rabbit IgG H&L Polyclonal antibody, HRP (PTB96431) at 0.1 µg/mL.

Predict MW: 45 kDa

Observed MW: 45 kDa



Western Blot

Various lysates were subjected to SDS PAGE followed by western blot with SERPINH1 antibody (PHE76601) at 1 µg/ml.

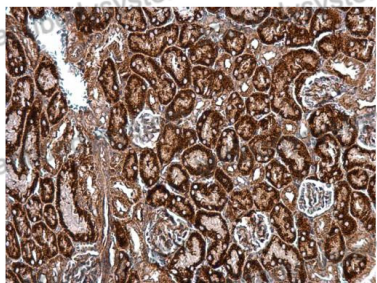
Lane 1: A431

Lane 2: NIH/3T3

Second Ab: Goat Anti-Rabbit IgG H&L Polyclonal antibody, HRP (PTB96431) at 0.1 µg/mL.

Predict MW: 46 kDa

Observed MW: 46 kDa



Immunohistochemical analysis of mouse kidney stained for SERPINH1 with PHE76601.

Immunohistochemical