

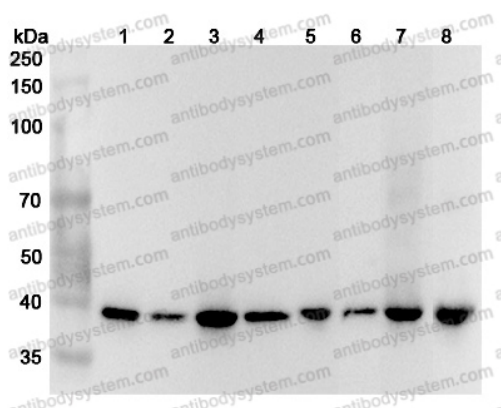
Anti-Human GIPC1 Polyclonal Antibody

Summary

Catalog No.	PHA34001
Host species	Rabbit
Tested applications	ELISA: 1:4000-1:8000, IHC: 1:50-1:100, WB: 1:1000-1:4000
Species reactivity	Human
Immunogen	E. coli - derived recombinant Human GIPC1 (Phe60-Tyr333).
Form	Liquid
Storage buffer	0.01M PBS, pH 7.4, 50% Glycerol, 0.05% Proclin 300.
Clonality	Polyclonal
Isotype	IgG
Applications	ELISA, IHC, WB
Target	GIPC, RGS19-interacting protein 1, Tax interaction protein 2, TIP-2, Synectin, RGS-GAIP-interacting protein, C19orf3, PDZ domain-containing protein GIPC1, RGS19IP1, GIPC1, GAIP C-terminus-interacting protein
Purification	Purified by antigen affinity column.
Accession	O14908
Stability and Storage	Use a manual defrost freezer and avoid repeated freeze thaw cycles. Store at 2 to 8°C for frequent use. Store at -20 to -80°C for twelve months from the date of receipt.
Note	For research use only.

Data Image

Various lysates were subjected to SDS PAGE followed by western blot with GIPC1 antibody (PHA34001) at 1µg/ml.



Western Blot

Lane 1: HepG2 cell lysate

Lane 2: Hela cell lysate

Lane 3: A549 cell lysate

Lane 4: 293T cell lysate

Lane 5: NIH3T3 cell lysate

Lane 6: PC-12 cell lysate

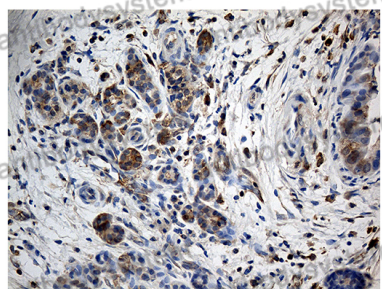
Lane 7: Mouse brain lysate

Lane 8: Rat brain lysate

Second Ab: Goat Anti-Rabbit IgG H&L Polyclonal antibody, HRP (PTB96431) at 0.1 µg/mL.

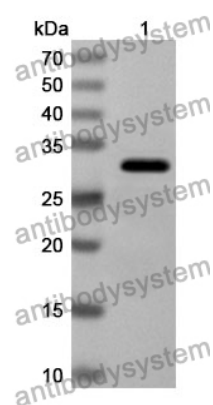
Predict MW: 36 kDa

Observed MW: 39 kDa



Immunohistochemical

Immunohistochemical analysis of human pancreas tissue stained for GIPC1 with PHA34001.



Western Blot

Recombinant Protein lysates were subjected to SDS PAGE followed by western blot with GIPC1 antibody (PHA34001) at 1 μ g/ml.

Lane 1: Recombinant Protein

Second Ab: Goat Anti-Rabbit IgG H&L Polyclonal antibody, HRP (PTB96431) at 0.1 μ g/mL.

Predict MW: 33 kDa

Observed MW: 33 kDa