

Anti-Human GGPS1 Polyclonal Antibody

Summary

Catalog No.	PHB73201
Host species	Rabbit
Tested applications	ELISA: 1:4000-1:8000, IHC: 1:50-1:100, WB: 1:1000-1:4000
Species reactivity	Human
Immunogen	E. coli - derived recombinant Human GGPS1 (Met1-Glu300).
Form	Liquid
Storage buffer	0.01M PBS, pH 7.4, 50% Glycerol, 0.05% Proclin 300.
Clonality	Polyclonal
Isotype	IgG
Applications	ELISA, IHC, WB
Target	Dimethylallyltranstransferase, Geranylgeranyl diphosphate synthase, Farnesyltranstransferase, GGPP synthase, GGPPSase, Geranylgeranyl pyrophosphate synthase, (2E,6E)-farnesyl diphosphate synthase, GGPS1, Geranyltranstransferase, Farnesyl diphosphate synthase
Purification	Purified by antigen affinity column.
Accession	O95749
Stability and Storage	Use a manual defrost freezer and avoid repeated freeze thaw cycles. Store at 2 to 8°C for frequent use. Store at -20 to -80°C for twelve months from the date of receipt.
Note	For research use only.

Data Image



WESTERN-BLOT

Recombinant Protein lysates were subjected to SDS PAGE followed by western blot with GGPS1 antibody (PHB73201) at 1 µg/ml.

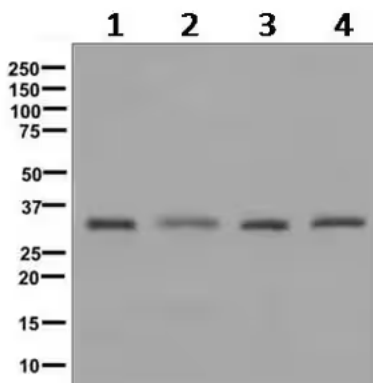
Lane 1: Recombinant protein

Second Ab: Goat Anti-Rabbit IgG H&L Polyclonal antibody, HRP (PTB96431) at 0.1 µg/mL.

Predict MW: 37 kDa

Observed MW: 37 kDa

Various lysates were subjected to SDS PAGE followed by western blot with GGPS1 antibody (PHB73201) at 1 µg/ml.



Western Blot

Lane 1: K562

Lane 2: Hela

Lane 3: HEK293T

Lane 4: Jurkat

Second Ab: Goat Anti-Rabbit IgG H&L Polyclonal antibody, HRP (PTB96431) at 0.1 µg/mL.

Predict MW: 35 kDa

Observed MW: 35 kDa



Immunohistochemical analysis of human prostate tissue stained for GGPS1 with PHB73201.

Immunohistochemical