

# Anti-Human FZR1 Polyclonal Antibody

## Summary

---

<b>Catalog No.</b>	PHK49401
<b>Host species</b>	Rabbit
<b>Tested applications</b>	ELISA: 1:4000-1:8000, IHC: 1:50-1:100, WB: 1:1000-1:4000
<b>Species reactivity</b>	Human
<b>Immunogen</b>	E. coli - derived recombinant Human FZR1 (Ser172-Arg496).
<b>Form</b>	Liquid
<b>Storage buffer</b>	0.01M PBS, pH 7.4, 50% Glycerol, 0.05% Proclin 300.
<b>Clonality</b>	Polyclonal
<b>Isotype</b>	IgG
<b>Applications</b>	ELISA, IHC, WB
<b>Target</b>	FZR, hCDH1, Fizzy-related protein homolog, Cdh1/Hct1 homolog, Fzr, CDH1, CDC20-like protein 1, KIAA1242, FYR, FZR1
<b>Purification</b>	Purified by antigen affinity column.
<b>Accession</b>	Q9UM11
<b>Stability and Storage</b>	Use a manual defrost freezer and avoid repeated freeze thaw cycles. Store at 2 to 8°C for frequent use. Store at -20 to -80°C for twelve months from the date of receipt.
<b>Note</b>	For research use only.

## Data Image

---



Recombinant Protein lysates were subjected to SDS PAGE followed by western blot with FZR1 antibody (PHK49401) at 1 µg/ml.

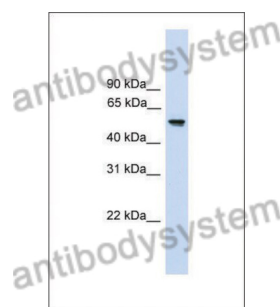
Lane 1: Recombinant Protein

Second Ab: Goat Anti-Rabbit IgG H&L Polyclonal antibody, HRP (PTB96431) at 0.1 µg/mL.

Predict MW: 38 kDa

Observed MW: 38 kDa

Various lysates were subjected to SDS PAGE followed by western blot with FZR1 antibody (PHK49401) at 1 µg/ml.

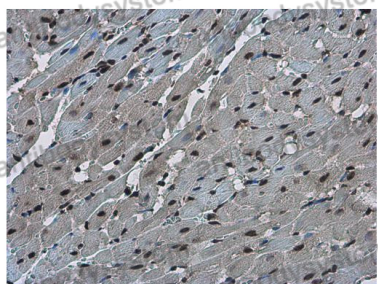


Lane 1: 721-B cell

Second Ab: Goat Anti-Rabbit IgG H&L Polyclonal antibody, HRP (PTB96431) at 0.1 µg/mL.

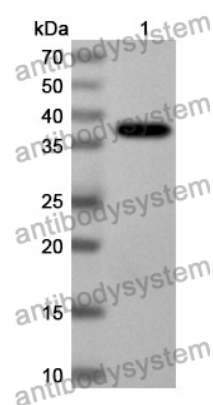
Predict MW: 55 kDa

Observed MW: 55 kDa



Immunohistochemical

Immunohistochemical analysis of rat heart tissue stained for FZR1 with PHK49401.



Western Blot

Recombinant Protein lysates were subjected to SDS PAGE followed by western blot with FZR1 antibody (PHK49401) at 1  $\mu$ g/ml.

Lane 1: Recombinant Protein

Second Ab: Goat Anti-Rabbit IgG H&L Polyclonal antibody, HRP (PTB96431) at 0.1  $\mu$ g/mL.

Predict MW: 38 kDa

Observed MW: 38 kDa