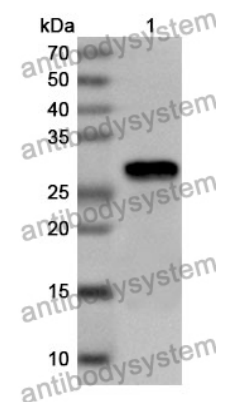


Anti GSDME Polyclonal Antibody

Summary

Catalog No.	PHA91101
Host species	Rabbit
Tested applications	ELISA: 1:4000-1:8000, IHC: 1:50-1:100 ,IF: 1:50-1:100, WB: 1:1000-1:4000
Species reactivity	Human, Mouse, Rat
Immunogen	E. coli - derived recombinant Human GSDME (Met1-Cys235).
Form	Liquid
Storage buffer	0.01M PBS, pH 7.4, 50% Glycerol, 0.05% Proclin 300.
Concentration	1.16 mg/ml
Clonality	Polyclonal
Isotype	IgG
Applications	ELISA, IHC, IF, WB
Target	ICERE-1, ICERE1, GSDME-CT, GSDME-NT, DFNA5, Inversely correlated with estrogen receptor expression 1, Gasdermin-E, GSDME, Non-syndromic hearing impairment protein 5
Purification	Purified by antigen affinity column.
Accession	O60443
Stability and Storage	Use a manual defrost freezer and avoid repeated freeze thaw cycles. Store at 2 to 8°C for frequent use. Store at -20 to -80°C for twelve months from the date of receipt.
Note	For research use only.

Data Image



WESTERN-BLOT

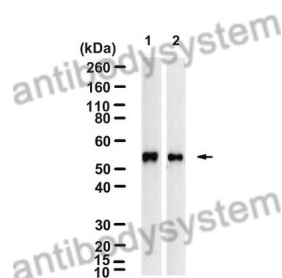
Recombinant Protein lysates were subjected to SDS PAGE followed by western blot with GSDME antibody (PHA91101) at 1 μ g/ml.

Lane 1: Recombinant protein

Second Ab: Goat Anti-Rabbit IgG H&L Polyclonal antibody, HRP (PTB96431) at 0.1 μ g/mL.

Predict MW: 28 kDa

Observed MW: 28 kDa



Western Blot

Various lysates were subjected to SDS PAGE followed by western blot with GSDME antibody (PHA91101) at 1 μ g/ml.

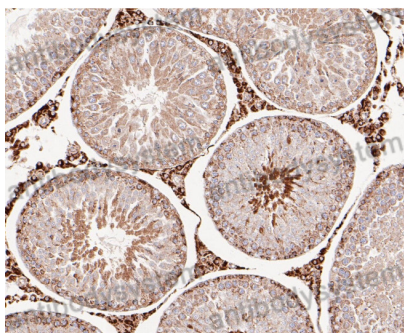
Lane 1: A549

Lane 2: SH-SY5Y

Second Ab: Goat Anti-Rabbit IgG H&L Polyclonal antibody, HRP (PTB96431) at 0.1 μ g/mL.

Predict MW: 55 kDa

Observed MW: 55 kDa



Immunohistochemical analysis of rat testis stained for GSDME with PHA91101.

Immunohistochemical