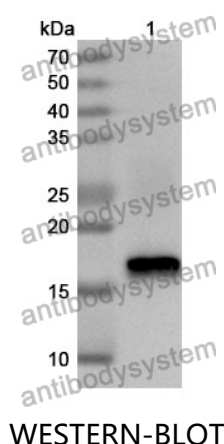


Anti-Human CCDC93 Polyclonal Antibody

Summary

Catalog No.	PHH93101
Host species	Rabbit
Tested applications	ELISA: 1:4000-1:8000, IHC: 1:50-1:100, WB: 1:1000-1:4000
Species reactivity	Human
Immunogen	E. coli - derived recombinant Human CCDC93 (Asp20-Ser151).
Form	Liquid
Storage buffer	0.01M PBS, pH 7.4, 50% Glycerol, 0.05% Proclin 300.
Clonality	Polyclonal
Isotype	IgG
Applications	ELISA, IHC, WB
Target	CCDC93, Coiled-coil domain-containing protein 93
Purification	Purified by antigen affinity column.
Accession	Q567U6
Stability and Storage	Use a manual defrost freezer and avoid repeated freeze thaw cycles. Store at 2 to 8°C for frequent use. Store at -20 to -80°C for twelve months from the date of receipt.
Note	For research use only.

Data Image



Recombinant Protein lysates were subjected to SDS PAGE followed by western blot with CCDC93 antibody (PHH93101) at 1 µg/ml.

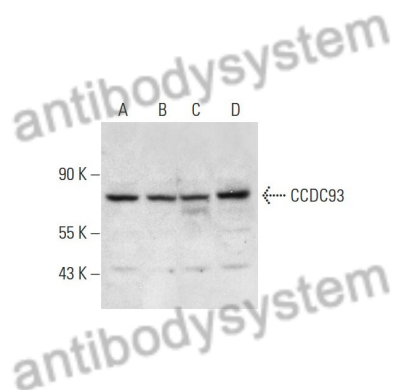
Lane 1: Recombinant protein

Second Ab: Goat Anti-Rabbit IgG H&L Polyclonal antibody, HRP (PTB96431) at 0.1 µg/mL.

Predict MW: 17 kDa

Observed MW: 17 kDa

Various lysates were subjected to SDS PAGE followed by western blot with CCDC93 antibody (PHH93101) at 1 µg/ml.



Lane 1: JAR

Lane 2: HeLa

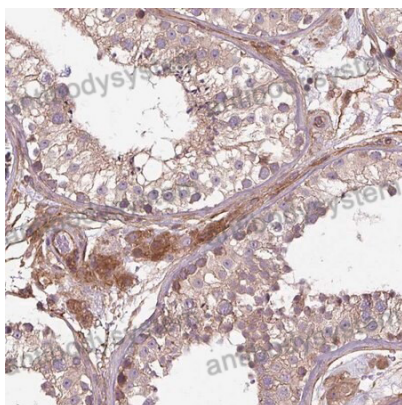
Lane 3: HepG2

Lane 4: Jurkat

Second Ab: Goat Anti-Rabbit IgG H&L Polyclonal antibody, HRP (PTB96431) at 0.1 µg/mL.

Predict MW: 73 kDa

Observed MW: 73 kDa



Immunohistochemical

Immunohistochemical analysis of human testis tissue stained for CCDC93 with PHH93101.